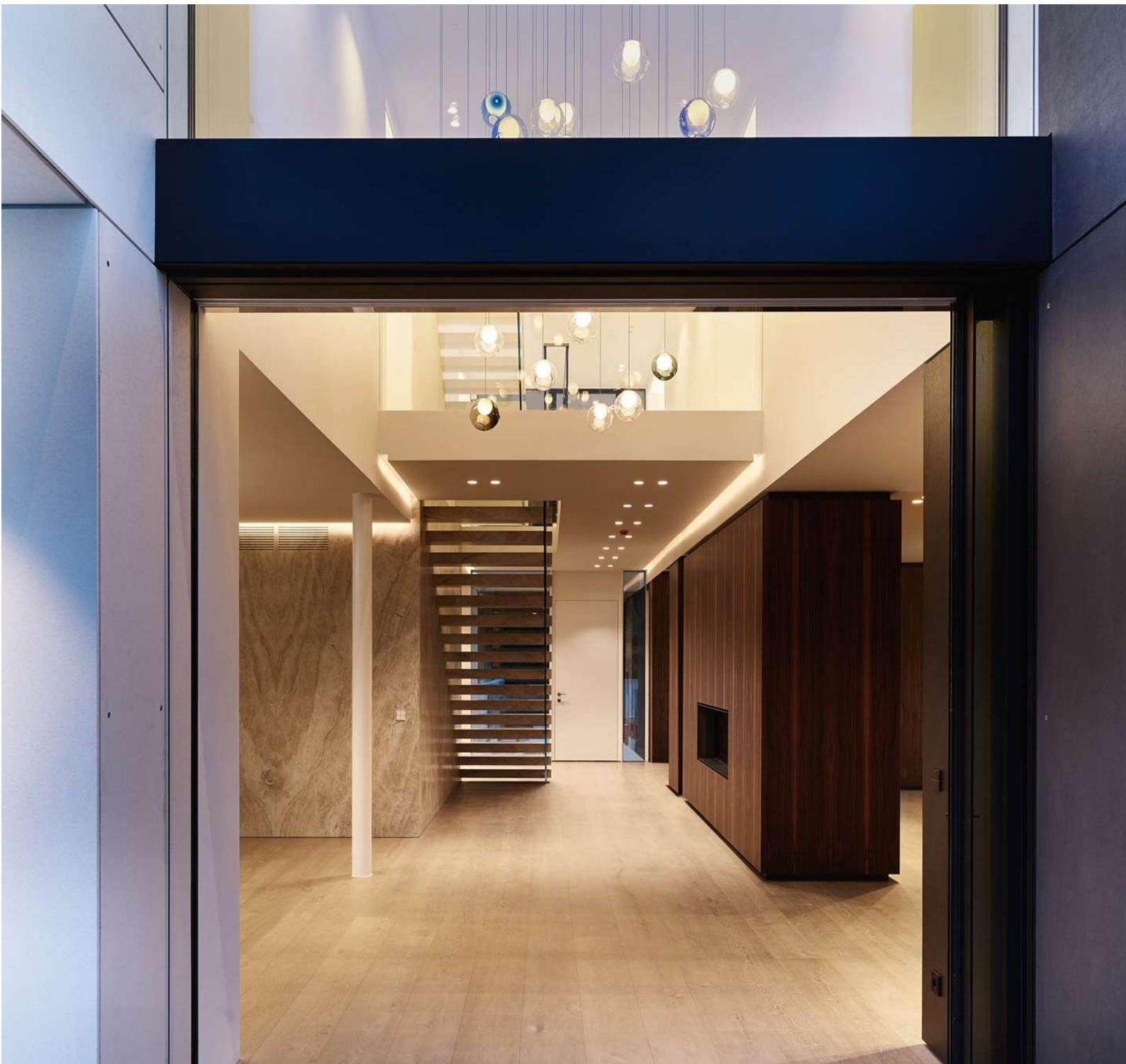


Liste de prix

*DLS
LIGHTING

Valable dès le 01.03.2024



Frais de port & TAR non compris

N° Article	Nom du luminaire	Description	Spécifications	PRIX BRUT H.T	PRIX BRUT T.T.C
D798	ALASKA	LED-recessed downlight, CRI>90, IP54, white	1x10W LED 32° 3000K CRI>90 500mA excl. driver	137.00	148.10
D648	ARIS	LED-recessed downlight, CRI>90, IP54, white	1x6,3W LED 38° 2700K CRI>90 350mA excl. driver	179.00	193.50
D627	ARIS	LED-recessed downlight, CRI>90, IP54, white	1x6,3W LED 38° 3000K CRI>90 350mA excl. driver	179.00	193.50
D649	ARIS	LED-recessed downlight, CRI>90, IP54, black	1x6,3W LED 38° 2700K CRI>90 350mA excl. driver	179.00	193.50
D644	ARIS	LED-recessed downlight, CRI>90, IP54, black	1x6,3W LED 38° 3000K CRI>90 350mA excl. driver	179.00	193.50
D900	ARKTIS MINI	LED-outdoor-fixture including ground spike, CRI>90, dimmable, IP65, black	1x4W LED 30° 3000K CRI>90 incl. driver phase dim	357.00	385.90
D846	ATLANTIS 75	LED-outdoor-fixture, CRI>90, IP68, black	1x5W LED 25° 3000K CRI>90 incl. driver	400.00	432.40
D847	ATLANTIS 75	Outdoor-fixture, IP65, black	1xGU10 LED 230 V	280.00	302.70
D845	ATLANTIS 95	LED-outdoor-fixture, CRI>90, dimmable, IP68, black	1x7W LED 30° 3000K CRI>90 incl. driver phase dim	557.00	602.10
D139	ATLANTIS ground spike	Ground spike, black	-	20.00	21.60
D135	ATLANTIS mounting box	Mounting box, black	-	66.00	71.35
D149	ATLANTIS tree strap	Tree strap, strap length 2 m, black	-	108.00	116.75
D976	ATLANTIS 75 POLE	LED-outdoor-fixture with mounting pole and ground spike, CRI>90, IP68, black	1x5W LED 25° 3000K CRI>90 incl. driver	539.00	582.65
D977	ATLANTIS 75 POLE	Outdoor-fixture with mounting pole and ground spike, IP65, black	1xGU10 LED 230 V	419.00	452.95
D796	ATLANTIS 75 POLE DUO	LED-outdoor-fixture, double, with mounting pole and ground spike, CRI>90, IP68, black	2x5W LED 25° 3000K CRI>90 incl. driver	939.00	1015.05
D797	ATLANTIS 75 POLE DUO	Outdoor-fixture, double, with mounting pole and ground spike, IP65, black	2xGU10 LED 230 V	699.00	755.60
D161	MICRO JUNCTION BOX IP68 - II	Micro junction box IP68, for max. 1 luminaire	-	31.00	33.50
D162	MICRO JUNCTION BOX IP68 - IV	Micro junction box IP68, for max. 3 luminaires	-	73.00	78.90
D324	BALI S	Ceiling luminaire, white / anti glare ring black	1xGU10 LED 230 V	222.00	240.00
D325	BALI S	Ceiling luminaire, white / anti glare ring gold	1xGU10 LED 230 V	222.00	240.00
D328	BALI S	Ceiling luminaire, black / anti glare ring black	1xGU10 LED 230 V	222.00	240.00
D329	BALI S	Ceiling luminaire, black / anti glare ring gold	1xGU10 LED 230 V	222.00	240.00
D314	BALI	Ceiling luminaire, white / anti glare ring black	1xGU10 LED 230 V	244.00	263.75
D315	BALI	Ceiling luminaire, white / anti glare ring gold	1xGU10 LED 230 V	244.00	263.75
D312	BALI	Ceiling luminaire, black / anti glare ring black	1xGU10 LED 230 V	244.00	263.75
D313	BALI	Ceiling luminaire, black / anti glare ring gold	1xGU10 LED 230 V	244.00	263.75
D908	BALI L	Ceiling luminaire, white / anti glare ring black	1xGU10 LED 230 V	273.00	295.10
D909	BALI L	Ceiling luminaire, white / anti glare ring gold	1xGU10 LED 230 V	273.00	295.10
D906	BALI L	Ceiling luminaire, black / anti glare ring black	1xGU10 LED 230 V	273.00	295.10
D907	BALI L	Ceiling luminaire, black / anti glare ring gold	1xGU10 LED 230 V	273.00	295.10
D307	BIG	Recessed downlight, white	1xGU10 LED 230 V	62.00	67.00
D407	BIG	Recessed downlight, white	1xGU5,3 LED excl. transformer	62.00	67.00
D502	BIG	Recessed downlight, black	1xGU10 LED 230 V	62.00	67.00
D504	BIG	Recessed downlight, black	1xGU5,3 LED excl. transformer	62.00	67.00
D306	BIG	Recessed downlight, grey	1xGU10 LED 230 V	62.00	67.00
D406	BIG	Recessed downlight, grey	1xGU5,3 LED excl. transformer	62.00	67.00
D757	BRICK 15 LED	LED-wall luminaire, CRI>90, dimmable, white	9W LED 2700K CRI>90 incl. driver phase dim	379.00	409.70
D355	BRICK 15	Wall luminaire, white	1xG9 LED or 1x48W halogen 230 V	206.00	222.70
D759	BRICK 15 LED	LED-wall luminaire, CRI>90, dimmable, chrome	9W LED 2700K CRI>90 incl. driver phase dim	430.00	464.85
D301	BRICK 15	Wall luminaire, chrome	1xG9 LED or 1x48W halogen 230 V	228.00	246.45
D303	BRICK 15	Wall luminaire, grey	1xG9 LED or 1x48W halogen 230 V	206.00	222.70
D756	BRICK 30 LED	LED-wall luminaire, CRI>90, dimmable, white	18W LED 2700K CRI>90 incl. driver phase dim	524.00	566.45
D356	BRICK 30	Wall luminaire, white	3xG9 LED or 3x48W halogen 230 V	302.00	326.45
D758	BRICK 30 LED	LED-wall luminaire, CRI>90, dimmable, chrome	18W LED 2700K CRI>90 incl. driver phase dim	568.00	614.00
D302	BRICK 30	Wall luminaire, chrome	3xG9 LED or 3x48W halogen 230 V	333.00	359.95
D304	BRICK 30	Wall luminaire, grey	3xG9 LED or 3x48W halogen 230 V	302.00	326.45
D950	CAPRI	LED-wall luminaire, CRI>90, white	1x4W LED 40° 2700K CRI>90 230 V	270.00	291.85
D951	CAPRI	LED-wall luminaire, CRI>90, black	1x4W LED 40° 2700K CRI>90 230 V	270.00	291.85
D189	CAPRI mounting plate	Mounting plate for junction boxes ø 68 mm for CAPRI, white	-	16.00	17.30
D190	CAPRI mounting plate	Mounting plate for junction boxes ø 68 mm for CAPRI, black	-	16.00	17.30
D212	CENTRO	LED-recessed downlight, CRI>90, white	1x13W LED 75° 3000K CRI>90 350mA excl. driver	186.00	201.05
D222	CENTRO	LED-recessed downlight, CRI>90, black	1x13W LED 75° 3000K CRI>90 350mA excl. driver	186.00	201.05
D258	CENTRO XL	LED-recessed downlight, CRI>90, white	1x27W LED 80° 3000K CRI>90 700mA excl. driver	277.00	299.45
D862	CENTRO XL	LED-recessed downlight, CRI>90, black	1x27W LED 80° 3000K CRI>90 700mA excl. driver	277.00	299.45
D285	CHARME	LED-wall luminaire, white	2x3W LED 3000K incl. driver	264.00	285.40
D793	CITY XS	LED-recessed downlight, CRI>90, white	3x3,4W LED 36° 3000K CRI>90 1050mA excl. driver	171.00	184.85
D993	CITY XS	LED-recessed downlight, CRI>90, gold	3x3,4W LED 36° 3000K CRI>90 1050mA excl. driver	171.00	184.85

N° Article	Nom du luminaire	Description	Spécifications	PRIX BRUT H.T	PRIX BRUT T.T.C
D256	CITY S	LED-recessed downlight, CRI>90, white	5x3,4W LED 36° 3000K CRI>90 1050mA excl. driver	259.00	280.00
D956	CITY S	LED-recessed downlight, CRI>90, gold	5x3,4W LED 36° 3000K CRI>90 1050mA excl. driver	259.00	280.00
D257	CITY	LED-recessed downlight, CRI>90, white	7x3,4W LED 36° 3000K CRI>90 1050mA excl. driver	300.00	324.30
D957	CITY	LED-recessed downlight, CRI>90, gold	7x3,4W LED 36° 3000K CRI>90 1050mA excl. driver	300.00	324.30
D352	CL 15	Ceiling luminaire, IP44, white	1xE27 LED 230 V	162.00	175.10
D422	CL 15	Ceiling luminaire, IP44, black	1xE27 LED 230 V	162.00	175.10
D351	CL 15	Ceiling luminaire, IP44, grey	1xE27 LED 230 V	162.00	175.10
D617	CLEO	LED-pendant, dimmable, black	1x7W LED 2700K incl. driver phase dim	360.00	389.15
D619	CLEO	LED-pendant, dimmable, brass	1x7W LED 2700K incl. driver phase dim	408.00	441.05
D-LP5	LP 5	Rectangular housing, 1200x120x45 mm, for max 5 CLEO, white	230 V phase dim	542.00	585.90
D-LP5-BL	LP 5	Rectangular housing, 1200x120x45 mm, for max 5 CLEO, black	230 V phase dim	542.00	585.90
D-LP7	LP 7	Round housing, ø 470x45 mm, for max 7 CLEO, white	230 V phase dim	631.00	682.10
D-LP7-BL	LP 7	Round housing, ø 470x45 mm, for max 7 CLEO, black	230 V phase dim	631.00	682.10
D-LP8	LP 8	Rectangular housing, 900x300x45 mm, for max 8 CLEO, white	230 V phase dim	773.00	835.60
D-LP8-BL	LP 8	Rectangular housing, 900x300x45 mm, for max 8 CLEO, black	230 V phase dim	773.00	835.60
D-STAR	STAR	Round housing, ø 140x35 mm, for max 3 CLEO, white	230 V phase dim	302.00	326.45
D-STAR-BL	STAR	Round housing, ø 140x35 mm, for max 3 CLEO, black	230 V phase dim	302.00	326.45
D136	CABLE HOLDER	Cable holder for ø 2-6mm wires, for decentralised mounting, white	-	48.00	51.90
D137	CABLE HOLDER	Cable holder for ø 2-6mm wires, for decentralised mounting, black	-	48.00	51.90
D105	CABLE KIT 5 CLEO	Special length KIT 5.000 mm for CLEO	-	68.00	73.50
D574	CLIPPO	LED-wall and ceiling luminaire, CRI>90, dim to warm, white / anti glare ring white	1x13W LED 33° dim to warm 1910K – 3000K CRI>90 incl. driver phase dim	350.00	378.35
D775	CLIPPO	LED-wall and ceiling luminaire, CRI>90, dimmable, white / anti glare ring white	1x14W LED 32° 2700K CRI>90 incl. driver phase dim	317.00	342.70
D777	CLIPPO	LED-wall and ceiling luminaire, CRI>90, dimmable, white / anti glare ring white	1x14W LED 32° 3000K CRI>90 incl. driver phase dim	317.00	342.70
D574-DALI	CLIPPO dali	LED-wall and ceiling luminaire, CRI>90, dim to warm, white / anti glare ring white	1x13W LED 33° dim to warm 1910K – 3000K CRI>90 incl. driver DALI dim	440.00	475.65
D775-DALI	CLIPPO dali	LED-wall and ceiling luminaire, CRI>90, dimmable, white / anti glare ring white	1x14W LED 32° 2700K CRI>90 incl. driver DALI dim	408.00	441.05
D777-DALI	CLIPPO dali	LED-wall and ceiling luminaire, CRI>90, dimmable, white / anti glare ring white	1x14W LED 32° 3000K CRI>90 incl. driver DALI dim	408.00	441.05
D576	CLIPPO	LED-wall and ceiling luminaire, CRI>90, dim to warm, white / anti glare ring gold	1x13W LED 33° dim to warm 1910K – 3000K CRI>90 incl. driver phase dim	350.00	378.35
D945	CLIPPO	LED-wall and ceiling luminaire, CRI>90, dimmable, white / anti glare ring gold	1x14W LED 32° 2700K CRI>90 incl. driver phase dim	317.00	342.70
D947	CLIPPO	LED-wall and ceiling luminaire, CRI>90, dimmable, white / anti glare ring gold	1x14W LED 32° 3000K CRI>90 incl. driver phase dim	317.00	342.70
D576-DALI	CLIPPO dali	LED-wall and ceiling luminaire, CRI>90, dim to warm, white / anti glare ring gold	1x13W LED 33° dim to warm 1910K – 3000K CRI>90 incl. driver DALI dim	440.00	475.65
D945-DALI	CLIPPO dali	LED-wall and ceiling luminaire, CRI>90, dimmable, white / anti glare ring gold	1x14W LED 32° 2700K CRI>90 incl. driver DALI dim	408.00	441.05
D947-DALI	CLIPPO dali	LED-wall and ceiling luminaire, CRI>90, dimmable, white / anti glare ring gold	1x14W LED 32° 3000K CRI>90 incl. driver DALI dim	408.00	441.05
D577	CLIPPO	LED-wall and ceiling luminaire, CRI>90, dim to warm, black / anti glare ring black	1x13W LED 33° dim to warm 1910K – 3000K CRI>90 incl. driver phase dim	350.00	378.35
D995	CLIPPO	LED-wall and ceiling luminaire, CRI>90, dimmable, black / anti glare ring black	1x14W LED 32° 2700K CRI>90 incl. driver phase dim	317.00	342.70
D997	CLIPPO	LED-wall and ceiling luminaire, CRI>90, dimmable, black / anti glare ring black	1x14W LED 32° 3000K CRI>90 incl. driver phase dim	317.00	342.70
D577-DALI	CLIPPO dali	LED-wall and ceiling luminaire, CRI>90, dim to warm, black / anti glare ring black	1x13W LED 33° dim to warm 1910K – 3000K CRI>90 incl. driver DALI dim	440.00	475.65
D995-DALI	CLIPPO dali	LED-wall and ceiling luminaire, CRI>90, dimmable, black / anti glare ring black	1x14W LED 32° 2700K CRI>90 incl. driver DALI dim	408.00	441.05
D997-DALI	CLIPPO dali	LED-wall and ceiling luminaire, CRI>90, dimmable, black / anti glare ring black	1x14W LED 32° 3000K CRI>90 incl. driver DALI dim	408.00	441.05
D578	CLIPPO	LED-wall and ceiling luminaire, CRI>90, dim to warm, black / anti glare ring gold	1x13W LED 33° dim to warm 1910K – 3000K CRI>90 incl. driver phase dim	350.00	378.35
D985	CLIPPO	LED-wall and ceiling luminaire, CRI>90, dimmable, black / anti glare ring gold	1x14W LED 32° 2700K CRI>90 incl. driver phase dim	317.00	342.70
D987	CLIPPO	LED-wall and ceiling luminaire, CRI>90, dimmable, black / anti glare ring gold	1x14W LED 32° 3000K CRI>90 incl. driver phase dim	317.00	342.70
D578-DALI	CLIPPO dali	LED-wall and ceiling luminaire, CRI>90, dim to warm, black / anti glare ring gold	1x13W LED 33° dim to warm 1910K – 3000K CRI>90 incl. driver DALI dim	440.00	475.65
D985-DALI	CLIPPO dali	LED-wall and ceiling luminaire, CRI>90, dimmable, black / anti glare ring gold	1x14W LED 32° 2700K CRI>90 incl. driver DALI dim	408.00	441.05
D987-DALI	CLIPPO dali	LED-wall and ceiling luminaire, CRI>90, dimmable, black / anti glare ring gold	1x14W LED 32° 3000K CRI>90 incl. driver DALI dim	408.00	441.05
D574-P3	CLIPPO P3	LED-wall and ceiling luminaire with 3-phase universal adapter, CRI>90, dim to warm, white / anti glare ring white	1x13W LED 33° dim to warm 1910K – 3000K CRI>90 incl. driver phase dim	400.00	432.40
D775-P3	CLIPPO P3	LED-wall and ceiling luminaire with 3-phase universal adapter, CRI>90, dimmable, white / anti glare ring white	1x14W LED 32° 2700K CRI>90 incl. driver phase dim	368.00	397.80
D777-P3	CLIPPO P3	LED-wall and ceiling luminaire with 3-phase universal adapter, CRI>90, dimmable, white / anti glare ring white	1x14W LED 32° 3000K CRI>90 incl. driver phase dim	368.00	397.80
D576-P3	CLIPPO P3	LED-wall and ceiling luminaire with 3-phase universal adapter, CRI>90, dim to warm, white / anti glare ring gold	1x13W LED 33° dim to warm 1910K – 3000K CRI>90 incl. driver phase dim	400.00	432.40
D945-P3	CLIPPO P3	LED-wall and ceiling luminaire with 3-phase universal adapter, CRI>90, dimmable, white / anti glare ring gold	1x14W LED 32° 2700K CRI>90 incl. driver phase dim	368.00	397.80
D947-P3	CLIPPO P3	LED-wall and ceiling luminaire with 3-phase universal adapter, CRI>90, dimmable, white / anti glare ring gold	1x14W LED 32° 3000K CRI>90 incl. driver phase dim	368.00	397.80
D577-P3	CLIPPO P3	LED-wall and ceiling luminaire with 3-phase universal adapter, CRI>90, dim to warm, black / anti glare ring black	1x13W LED 33° dim to warm 1910K – 3000K CRI>90 incl. driver phase dim	400.00	432.40
D995-P3	CLIPPO P3	LED-wall and ceiling luminaire with 3-phase universal adapter, CRI>90, dimmable, black / anti glare ring black	1x14W LED 32° 2700K CRI>90 incl. driver phase dim	368.00	397.80
D997-P3	CLIPPO P3	LED-wall and ceiling luminaire with 3-phase universal adapter, CRI>90, dimmable, black / anti glare ring black	1x14W LED 32° 3000K CRI>90 incl. driver phase dim	368.00	397.80
D578-P3	CLIPPO P3	LED-wall and ceiling luminaire with 3-phase universal adapter, CRI>90, dim to warm, black / anti glare ring gold	1x13W LED 33° dim to warm 1910K – 3000K CRI>90 incl. driver phase dim	400.00	432.40
D985-P3	CLIPPO P3	LED-wall and ceiling luminaire with 3-phase universal adapter, CRI>90, dimmable, black / anti glare ring gold	1x14W LED 32° 2700K CRI>90 incl. driver phase dim	368.00	397.80
D987-P3	CLIPPO P3	LED-wall and ceiling luminaire with 3-phase universal adapter, CRI>90, dimmable, black / anti glare ring gold	1x14W LED 32° 3000K CRI>90 incl. driver phase dim	368.00	397.80
D720	CLIPPO DUO	LED-wall and ceiling luminaire, CRI>90, dim to warm, white / anti glare ring white	2x13W LED 33° dim to warm 1910K – 3000K CRI>90 incl. driver phase dim	519.00	561.05

N° Article	Nom du luminaire	Description	Spécifications	PRIX BRUT H.T.	PRIX BRUT T.T.C.
D611	CLIPPO DUO	LED-wall and ceiling luminaire, CRI>90, dimmable, white / anti glare ring white	2x14W LED 32° 2700K CRI>90 incl. driver phase dim	453.00	489.70
D615	CLIPPO DUO	LED-wall and ceiling luminaire, CRI>90, dimmable, white / anti glare ring white	2x14W LED 32° 3000K CRI>90 incl. driver phase dim	453.00	489.70
D720-DALI	CLIPPO DUO dali	LED-wall and ceiling luminaire, CRI>90, dim to warm, white / anti glare ring white	2x13W LED 33° dim to warm 1910K – 3000K CRI>90 incl. driver DALI dim	700.00	756.70
D611-DALI	CLIPPO DUO dali	LED-wall and ceiling luminaire, CRI>90, dimmable, white / anti glare ring white	2x14W LED 32° 2700K CRI>90 incl. driver DALI dim	635.00	686.45
D615-DALI	CLIPPO DUO dali	LED-wall and ceiling luminaire, CRI>90, dimmable, white / anti glare ring white	2x14W LED 32° 3000K CRI>90 incl. driver DALI dim	635.00	686.45
D721	CLIPPO DUO	LED-wall and ceiling luminaire, CRI>90, dim to warm, white / anti glare ring gold	2x13W LED 33° dim to warm 1910K – 3000K CRI>90 incl. driver phase dim	519.00	561.05
D612	CLIPPO DUO	LED-wall and ceiling luminaire, CRI>90, dimmable, white / anti glare ring gold	2x14W LED 32° 2700K CRI>90 incl. driver phase dim	453.00	489.70
D616	CLIPPO DUO	LED-wall and ceiling luminaire, CRI>90, dimmable, white / anti glare ring gold	2x14W LED 32° 3000K CRI>90 incl. driver phase dim	453.00	489.70
D721-DALI	CLIPPO DUO dali	LED-wall and ceiling luminaire, CRI>90, dim to warm, white / anti glare ring gold	2x13W LED 33° dim to warm 1910K – 3000K CRI>90 incl. driver DALI dim	700.00	756.70
D612-DALI	CLIPPO DUO dali	LED-wall and ceiling luminaire, CRI>90, dimmable, white / anti glare ring gold	2x14W LED 32° 2700K CRI>90 incl. driver DALI dim	635.00	686.45
D616-DALI	CLIPPO DUO dali	LED-wall and ceiling luminaire, CRI>90, dimmable, white / anti glare ring gold	2x14W LED 32° 3000K CRI>90 incl. driver DALI dim	635.00	686.45
D704	CLIPPO DUO	LED-wall and ceiling luminaire, CRI>90, dim to warm, black / anti glare ring black	2x13W LED 33° dim to warm 1910K – 3000K CRI>90 incl. driver phase dim	519.00	561.05
D609	CLIPPO DUO	LED-wall and ceiling luminaire, CRI>90, dimmable, black / anti glare ring black	2x14W LED 32° 2700K CRI>90 incl. driver phase dim	453.00	489.70
D613	CLIPPO DUO	LED-wall and ceiling luminaire, CRI>90, dimmable, black / anti glare ring black	2x14W LED 32° 3000K CRI>90 incl. driver phase dim	453.00	489.70
D704-DALI	CLIPPO DUO dali	LED-wall and ceiling luminaire, CRI>90, dim to warm, black / anti glare ring black	2x13W LED 33° dim to warm 1910K – 3000K CRI>90 incl. driver DALI dim	700.00	756.70
D609-DALI	CLIPPO DUO dali	LED-wall and ceiling luminaire, CRI>90, dimmable, black / anti glare ring black	2x14W LED 32° 2700K CRI>90 incl. driver DALI dim	635.00	686.45
D613-DALI	CLIPPO DUO dali	LED-wall and ceiling luminaire, CRI>90, dimmable, black / anti glare ring black	2x14W LED 32° 3000K CRI>90 incl. driver DALI dim	635.00	686.45
D705	CLIPPO DUO	LED-wall and ceiling luminaire, CRI>90, dim to warm, black / anti glare ring gold	2x13W LED 33° dim to warm 1910K – 3000K CRI>90 incl. driver phase dim	519.00	561.05
D610	CLIPPO DUO	LED-wall and ceiling luminaire, CRI>90, dimmable, black / anti glare ring gold	2x14W LED 32° 2700K CRI>90 incl. driver phase dim	453.00	489.70
D614	CLIPPO DUO	LED-wall and ceiling luminaire, CRI>90, dimmable, black / anti glare ring gold	2x14W LED 32° 3000K CRI>90 incl. driver phase dim	453.00	489.70
D705-DALI	CLIPPO DUO dali	LED-wall and ceiling luminaire, CRI>90, dim to warm, black / anti glare ring gold	2x13W LED 33° dim to warm 1910K – 3000K CRI>90 incl. driver DALI dim	700.00	756.70
D610-DALI	CLIPPO DUO dali	LED-wall and ceiling luminaire, CRI>90, dimmable, black / anti glare ring gold	2x14W LED 32° 2700K CRI>90 incl. driver DALI dim	635.00	686.45
D614-DALI	CLIPPO DUO dali	LED-wall and ceiling luminaire, CRI>90, dimmable, black / anti glare ring gold	2x14W LED 32° 3000K CRI>90 incl. driver DALI dim	635.00	686.45
D729	CLIPPO EP	LED-ceiling recessed luminaire, CRI>90, dim to warm, white / anti glare ring white	1x13W LED 33° dim to warm 1910K – 3000K CRI>90 350mA excl. driver	204.00	220.50
D676	CLIPPO EP	LED-ceiling recessed luminaire, CRI>90, white / anti glare ring white	1x14W LED 32° 2700K CRI>90 500mA excl. driver	173.00	187.00
D692	CLIPPO EP	LED-ceiling recessed luminaire, CRI>90, white / anti glare ring white	1x14W LED 32° 3000K CRI>90 500mA excl. driver	173.00	187.00
D733	CLIPPO EP	LED-ceiling recessed luminaire, CRI>90, dim to warm, white / anti glare ring gold	1x13W LED 33° dim to warm 1910K – 3000K CRI>90 350mA excl. driver	204.00	220.50
D677	CLIPPO EP	LED-ceiling recessed luminaire, CRI>90, white / anti glare ring gold	1x14W LED 32° 2700K CRI>90 500mA excl. driver	173.00	187.00
D693	CLIPPO EP	LED-ceiling recessed luminaire, CRI>90, white / anti glare ring gold	1x14W LED 32° 3000K CRI>90 500mA excl. driver	173.00	187.00
D735	CLIPPO EP	LED-ceiling recessed luminaire, CRI>90, dim to warm, black / anti glare ring black	1x13W LED 33° dim to warm 1910K – 3000K CRI>90 350mA excl. driver	204.00	220.50
D674	CLIPPO EP	LED-ceiling recessed luminaire, CRI>90, black / anti glare ring black	1x14W LED 32° 2700K CRI>90 500mA excl. driver	173.00	187.00
D682	CLIPPO EP	LED-ceiling recessed luminaire, CRI>90, black / anti glare ring black	1x14W LED 32° 3000K CRI>90 500mA excl. driver	173.00	187.00
D738	CLIPPO EP	LED-ceiling recessed luminaire, CRI>90, dim to warm, black / anti glare ring gold	1x13W LED 33° dim to warm 1910K – 3000K CRI>90 350mA excl. driver	204.00	220.50
D675	CLIPPO EP	LED-ceiling recessed luminaire, CRI>90, black / anti glare ring gold	1x14W LED 32° 2700K CRI>90 500mA excl. driver	173.00	187.00
D683	CLIPPO EP	LED-ceiling recessed luminaire, CRI>90, black / anti glare ring gold	1x14W LED 32° 3000K CRI>90 500mA excl. driver	173.00	187.00
D146	CLIPPO honey comb louver	Honey comb louver for for CLIPPO, CLIPPO DUO and CLIPPO EP, black	–	25.00	27.05
DH-D998	CLIPPO anti glare ring	Magnetic anti glare ring for all CLIPPO versions, white	–	18.00	19.45
DH-D997	CLIPPO anti glare ring	Magnetic anti glare ring for all CLIPPO versions, black	–	18.00	19.45
DH-D999	CLIPPO anti glare ring	Magnetic anti glare ring for all CLIPPO versions, gold	–	18.00	19.45
DH-D594	CLIPPO reflector	Reflector 24° for CLIPPO versions 13W LED (dim to warm)	–	12.00	12.95
DH-D596	CLIPPO reflector	Reflector 50° for CLIPPO versions 13W LED (dim to warm)	–	12.00	12.95
DH-D877	CLIPPO lens	Lens 18° for CLIPPO versions 14W LED (2700K/3000K)	–	12.00	12.95
DH-D994	CLIPPO reflector	Reflector 15° for CLIPPO versions 14W LED (2700K/3000K)	–	12.00	12.95
DH-D996	CLIPPO reflector	Reflector 48° for CLIPPO versions 14W LED (2700K/3000K)	–	12.00	12.95
D849	CLIPPO TRIO	LED-wall and ceiling luminaire, CRI>90, dim to warm, white / anti glare ring white	3x9,5W LED 33° dim to warm 1910K – 3000K CRI>90 incl. driver phase dim	717.00	775.10
D454	CLIPPO TRIO	LED-wall and ceiling luminaire, CRI>90, dimmable, white / anti glare ring white	3x9,3W LED 32° 2700K CRI>90 incl. driver phase dim	644.00	696.15
D490	CLIPPO TRIO	LED-wall and ceiling luminaire, CRI>90, dimmable, white / anti glare ring white	3x9,3W LED 32° 3000K CRI>90 incl. driver phase dim	644.00	696.15
D849-DALI	CLIPPO TRIO dali	LED-wall and ceiling luminaire, CRI>90, dim to warm, white / anti glare ring white	3x9,5W LED 33° dim to warm 1910K – 3000K CRI>90 incl. driver DALI dim	837.00	904.80
D454-DALI	CLIPPO TRIO dali	LED-wall and ceiling luminaire, CRI>90, dimmable, white / anti glare ring white	3x9,3W LED 32° 2700K CRI>90 incl. driver DALI dim	764.00	825.90
D490-DALI	CLIPPO TRIO dali	LED-wall and ceiling luminaire, CRI>90, dimmable, white / anti glare ring white	3x9,3W LED 32° 3000K CRI>90 incl. driver DALI dim	764.00	825.90
D850	CLIPPO TRIO	LED-wall and ceiling luminaire, CRI>90, dim to warm, white / anti glare ring gold	3x9,5W LED 33° dim to warm 1910K – 3000K CRI>90 incl. driver phase dim	717.00	775.10
D457	CLIPPO TRIO	LED-wall and ceiling luminaire, CRI>90, dimmable, white / anti glare ring gold	3x9,3W LED 32° 2700K CRI>90 incl. driver phase dim	644.00	696.15
D497	CLIPPO TRIO	LED-wall and ceiling luminaire, CRI>90, dimmable, white / anti glare ring gold	3x9,3W LED 32° 3000K CRI>90 incl. driver phase dim	644.00	696.15
D850-DALI	CLIPPO TRIO dali	LED-wall and ceiling luminaire, CRI>90, dim to warm, white / anti glare ring gold	3x9,5W LED 33° dim to warm 1910K – 3000K CRI>90 incl. driver DALI dim	837.00	904.80
D457-DALI	CLIPPO TRIO dali	LED-wall and ceiling luminaire, CRI>90, dimmable, white / anti glare ring gold	3x9,3W LED 32° 2700K CRI>90 incl. driver DALI dim	764.00	825.90
D497-DALI	CLIPPO TRIO dali	LED-wall and ceiling luminaire, CRI>90, dimmable, white / anti glare ring gold	3x9,3W LED 32° 3000K CRI>90 incl. driver DALI dim	764.00	825.90
D851	CLIPPO TRIO	LED-wall and ceiling luminaire, CRI>90, dim to warm, black / anti glare ring black	3x9,5W LED 33° dim to warm 1910K – 3000K CRI>90 incl. driver phase dim	717.00	775.10

N° Article	Nom du luminaire	Description	Spécifications	PRIX BRUT H.T	PRIX BRUT T.T.C
D458	CLIPPO TRIO	LED-wall and ceiling luminaire, CRI>90, dimmable, black / anti glare ring black	3x9,3W LED 32° 2700K CRI>90 incl. driver phase dim	644.00	696.15
D498	CLIPPO TRIO	LED-wall and ceiling luminaire, CRI>90, dimmable, black / anti glare ring black	3x9,3W LED 32° 3000K CRI>90 incl. driver phase dim	644.00	696.15
D851-DALI	CLIPPO TRIO dali	LED-wall and ceiling luminaire, CRI>90, dim to warm, black / anti glare ring black	3x9,5W LED 33° dim to warm 1910K – 3000K CRI>90 incl. driver DALI dim	837.00	904.80
D458-DALI	CLIPPO TRIO dali	LED-wall and ceiling luminaire, CRI>90, dimmable, black / anti glare ring black	3x9,3W LED 32° 2700K CRI>90 incl. driver DALI dim	764.00	825.90
D498-DALI	CLIPPO TRIO dali	LED-wall and ceiling luminaire, CRI>90, dimmable, black / anti glare ring black	3x9,3W LED 32° 3000K CRI>90 incl. driver DALI dim	764.00	825.90
D852	CLIPPO TRIO	LED-wall and ceiling luminaire, CRI>90, dim to warm, black / anti glare ring gold	3x9,5W LED 33° dim to warm 1910K – 3000K CRI>90 incl. driver phase dim	717.00	775.10
D459	CLIPPO TRIO	LED-wall and ceiling luminaire, CRI>90, dimmable, black / anti glare ring gold	3x9,3W LED 32° 2700K CRI>90 incl. driver phase dim	644.00	696.15
D499	CLIPPO TRIO	LED-wall and ceiling luminaire, CRI>90, dimmable, black / anti glare ring gold	3x9,3W LED 32° 3000K CRI>90 incl. driver phase dim	644.00	696.15
D852-DALI	CLIPPO TRIO dali	LED-wall and ceiling luminaire, CRI>90, dim to warm, black / anti glare ring gold	3x9,5W LED 33° dim to warm 1910K – 3000K CRI>90 incl. driver DALI dim	837.00	904.80
D459-DALI	CLIPPO TRIO dali	LED-wall and ceiling luminaire, CRI>90, dimmable, black / anti glare ring gold	3x9,3W LED 32° 2700K CRI>90 incl. driver DALI dim	764.00	825.90
D499-DALI	CLIPPO TRIO dali	LED-wall and ceiling luminaire, CRI>90, dimmable, black / anti glare ring gold	3x9,3W LED 32° 3000K CRI>90 incl. driver DALI dim	764.00	825.90
D146	CLIPPO TRIO honey comb louver	Honey comb louver for for CLIPPO TRIO, black	-	25.00	27.05
DH-D594	CLIPPO TRIO reflector	Reflector 24° for CLIPPO TRIO 9,5W LED (dim to warm)	-	12.00	12.95
DH-D596	CLIPPO TRIO reflector	Reflector 50° for CLIPPO TRIO 9,5W LED (dim to warm)	-	12.00	12.95
DH-D877	CLIPPO TRIO lens	Lens 18° for CLIPPO TRIO 9,3W LED (2700K/3000K)	-	12.00	12.95
DH-D994	CLIPPO TRIO reflector	Reflector 15° for CLIPPO TRIO 9,3W LED (2700K/3000K)	-	12.00	12.95
DH-D996	CLIPPO TRIO reflector	Reflector 48° for CLIPPO TRIO 9,3W LED (2700K/3000K)	-	12.00	12.95
D506	CLIPPO OPTIC	LED-wall and ceiling luminaire, CRI>90, dim to warm, white	1x10,5W LED 35° dim to warm 1800K – 3000K CRI>90 incl. driver phase dim	397.00	429.15
D507	CLIPPO OPTIC	LED-wall and ceiling luminaire, CRI>90, dim to warm, black	1x10,5W LED 35° dim to warm 1800K – 3000K CRI>90 incl. driver phase dim	397.00	429.15
D493	CLIPPO OPTIC DUO	LED-wall and ceiling luminaire, CRI>90, dim to warm, white	2x10,5W LED 35° dim to warm 1800K – 3000K CRI>90 incl. driver phase dim	724.00	782.65
D494	CLIPPO OPTIC DUO	LED-wall and ceiling luminaire, CRI>90, dim to warm, black	2x10,5W LED 35° dim to warm 1800K – 3000K CRI>90 incl. driver phase dim	724.00	782.65
D506-P3	CLIPPO OPTIC P3	LED-wall and ceiling luminaire with 3-phase universal adapter, CRI>90, dim to warm, white	1x10,5W LED 35° dim to warm 1800K – 3000K CRI>90 incl. driver phase dim	448.00	484.30
D507-P3	CLIPPO OPTIC P3	LED-wall and ceiling luminaire with 3-phase universal adapter, CRI>90, dim to warm, black	1x10,5W LED 35° dim to warm 1800K – 3000K CRI>90 incl. driver phase dim	448.00	484.30
DH-D594	CLIPPO OPTIC reflector	Reflector 24° for CLIPPO OPTIC 10,5W LED (dim to warm)	-	12.00	12.95
DH-D596	CLIPPO OPTIC reflector	Reflector 50° for CLIPPO OPTIC 10,5W LED (dim to warm)	-	12.00	12.95
D230	CLIPPO OPTIC WALL	LED-wall luminaire, CRI>90, dim to warm, white	2x6W LED 80°/80° dim to warm 1800K – 3000K CRI>90 incl. driver phase dim	486.00	525.35
D231	CLIPPO OPTIC WALL	LED-wall luminaire, CRI>90, dim to warm, black	2x6W LED 80°/80° dim to warm 1800K – 3000K CRI>90 incl. driver phase dim	486.00	525.35
D345	CLIPPO S	LED-wall and ceiling luminaire, CRI>90, dim to warm, white / anti glare ring white	1x9,5W LED 34° dim to warm 1910K – 3000K CRI>90 incl. driver phase dim	244.00	263.75
D216	CLIPPO S	LED-wall and ceiling luminaire, CRI>90, dimmable, white / anti glare ring white	1x9,3W LED 34° 2700K CRI>90 incl. driver phase dim	235.00	254.05
D348	CLIPPO S	LED-wall and ceiling luminaire, CRI>90, dim to warm, white / anti glare ring gold	1x9,5W LED 34° dim to warm 1910K – 3000K CRI>90 incl. driver phase dim	244.00	263.75
D224	CLIPPO S	LED-wall and ceiling luminaire, CRI>90, dimmable, white / anti glare ring gold	1x9,3W LED 34° 2700K CRI>90 incl. driver phase dim	235.00	254.05
D338	CLIPPO S	LED-wall and ceiling luminaire, CRI>90, dim to warm, black / anti glare ring black	1x9,5W LED 34° dim to warm 1910K – 3000K CRI>90 incl. driver phase dim	244.00	263.75
D228	CLIPPO S	LED-wall and ceiling luminaire, CRI>90, dimmable, black / anti glare ring black	1x9,3W LED 34° 2700K CRI>90 incl. driver phase dim	235.00	254.05
D342	CLIPPO S	LED-wall and ceiling luminaire, CRI>90, dim to warm, black / anti glare ring gold	1x9,5W LED 34° dim to warm 1910K – 3000K CRI>90 incl. driver phase dim	244.00	263.75
D233	CLIPPO S	LED-wall and ceiling luminaire, CRI>90, dimmable, black / anti glare ring gold	1x9,3W LED 34° 2700K CRI>90 incl. driver phase dim	235.00	254.05
D331	CLIPPO S DUO	LED-wall and ceiling luminaire, CRI>90, dim to warm, white / anti glare ring white	2x9,5W LED 34° dim to warm 1910K – 3000K CRI>90 incl. driver phase dim	411.00	444.30
D234	CLIPPO S DUO	LED-wall and ceiling luminaire, CRI>90, dimmable, white / anti glare ring white	2x9,3W LED 34° 2700K CRI>90 incl. driver phase dim	393.00	424.85
D331-DALI	CLIPPO S DUO	LED-wall and ceiling luminaire, CRI>90, dim to warm, white / anti glare ring white	2x9,5W LED 34° dim to warm 1910K – 3000K CRI>90 incl. driver DALI dim	575.00	621.60
D234-DALI	CLIPPO S DUO	LED-wall and ceiling luminaire, CRI>90, dimmable, white / anti glare ring white	2x9,3W LED 34° 2700K CRI>90 incl. driver DALI dim	539.00	582.65
D336	CLIPPO S DUO	LED-wall and ceiling luminaire, CRI>90, dim to warm, white / anti glare ring gold	2x9,5W LED 34° dim to warm 1910K – 3000K CRI>90 incl. driver phase dim	411.00	444.30
D235	CLIPPO S DUO	LED-wall and ceiling luminaire, CRI>90, dimmable, white / anti glare ring gold	2x9,3W LED 34° 2700K CRI>90 incl. driver phase dim	393.00	424.85
D336-DALI	CLIPPO S DUO	LED-wall and ceiling luminaire, CRI>90, dim to warm, white / anti glare ring gold	2x9,5W LED 34° dim to warm 1910K – 3000K CRI>90 incl. driver DALI dim	575.00	621.60
D235-DALI	CLIPPO S DUO	LED-wall and ceiling luminaire, CRI>90, dimmable, white / anti glare ring gold	2x9,3W LED 34° 2700K CRI>90 incl. driver DALI dim	539.00	582.65
D305	CLIPPO S DUO	LED-wall and ceiling luminaire, CRI>90, dim to warm, black / anti glare ring black	2x9,5W LED 34° dim to warm 1910K – 3000K CRI>90 incl. driver phase dim	411.00	444.30
D236	CLIPPO S DUO	LED-wall and ceiling luminaire, CRI>90, dimmable, black / anti glare ring black	2x9,3W LED 34° 2700K CRI>90 incl. driver phase dim	393.00	424.85
D305-DALI	CLIPPO S DUO	LED-wall and ceiling luminaire, CRI>90, dim to warm, black / anti glare ring black	2x9,5W LED 34° dim to warm 1910K – 3000K CRI>90 incl. driver DALI dim	575.00	621.60
D236-DALI	CLIPPO S DUO	LED-wall and ceiling luminaire, CRI>90, dimmable, black / anti glare ring black	2x9,3W LED 34° 2700K CRI>90 incl. driver DALI dim	539.00	582.65
D310	CLIPPO S DUO	LED-wall and ceiling luminaire, CRI>90, dim to warm, black / anti glare ring gold	2x9,5W LED 34° dim to warm 1910K – 3000K CRI>90 incl. driver phase dim	411.00	444.30
D237	CLIPPO S DUO	LED-wall and ceiling luminaire, CRI>90, dimmable, black / anti glare ring gold	2x9,3W LED 34° 2700K CRI>90 incl. driver phase dim	393.00	424.85
D310-DALI	CLIPPO S DUO	LED-wall and ceiling luminaire, CRI>90, dim to warm, black / anti glare ring gold	2x9,5W LED 34° dim to warm 1910K – 3000K CRI>90 incl. driver DALI dim	575.00	621.60
D237-DALI	CLIPPO S DUO	LED-wall and ceiling luminaire, CRI>90, dimmable, black / anti glare ring gold	2x9,3W LED 34° 2700K CRI>90 incl. driver DALI dim	539.00	582.65
D896	CLIPPO S EP	LED-ceiling recessed luminaire, CRI>90, dim to warm, white / anti glare ring white	1x9,5W LED 34° dim to warm 1910K – 3000K CRI>90 500mA excl. driver	167.00	180.55
D260	CLIPPO S EP	LED-ceiling recessed luminaire, CRI>90, white / anti glare ring white	1x9,3W LED 34° 2700K CRI>90 500mA excl. driver	159.00	171.90
D897	CLIPPO S EP	LED-ceiling recessed luminaire, CRI>90, dim to warm, white / anti glare ring gold	1x9,5W LED 34° dim to warm 1910K – 3000K CRI>90 500mA excl. driver	167.00	180.55
D261	CLIPPO S EP	LED-ceiling recessed luminaire, CRI>90, white / anti glare ring gold	1x9,3W LED 34° 2700K CRI>90 500mA excl. driver	159.00	171.90
D898	CLIPPO S EP	LED-ceiling recessed luminaire, CRI>90, dim to warm, black / anti glare ring black	1x9,5W LED 34° dim to warm 1910K – 3000K CRI>90 500mA excl. driver	167.00	180.55
D264	CLIPPO S EP	LED-ceiling recessed luminaire, CRI>90, black / anti glare ring black	1x9,3W LED 34° 2700K CRI>90 500mA excl. driver	159.00	171.90

N° Article	Nom du luminaire	Description	Spécifications	PRIX BRUT H.T	PRIX BRUT T.T.C
D899	CLIPPO S EP	LED-ceiling recessed luminaire, CRI>90, dim to warm, black / anti glare ring gold	1x9,5W LED 34° dim to warm 1910K – 3000K CRI>90 500mA excl. drive	167.00	180.55
D270	CLIPPO S EP	LED-ceiling recessed luminaire, CRI>90, black / anti glare ring gold	1x9,3W LED 34° 2700K CRI>90 500mA excl. driver	159.00	171.90
D147	CLIPPO S honey comb louver	Honey comb louver for all CLIPPO S versions, black	–	20.00	21.60
DH-D309	CLIPPO S anti glare ring	Magnetic anti glare ring for all CLIPPO S versions, white	–	15.00	16.20
DH-D308	CLIPPO S anti glare ring	Magnetic anti glare ring for all CLIPPO S versions, black	–	15.00	16.20
DH-D310	CLIPPO S anti glare ring	Magnetic anti glare ring for all CLIPPO S versions, gold	–	15.00	16.20
D189	CLIPPO S mounting plate	Mounting plate for junction boxes Ø 68 mm for CLIPPO S, white	–	16.00	17.30
D190	CLIPPO S mounting plate	Mounting plate for junction boxes Ø 68 mm for CLIPPO S, black	–	16.00	17.30
DH-D305	CLIPPO S reflector	Reflector 24° for CLIPPO S versions 9,5W LED (dim to warm)	–	12.00	12.95
DH-D307	CLIPPO S reflector	Reflector 48° for CLIPPO S versions 9,5W LED (dim to warm)	–	12.00	12.95
DH-D301	CLIPPO S reflector	Reflector 24° for CLIPPO S versions 9,3W LED (2700K)	–	12.00	12.95
DH-D303	CLIPPO S reflector	Reflector 48° for CLIPPO S versions 9,3W LED (2700K)	–	12.00	12.95
D940	CONE	Recessed downlight, white	1xGU10 LED 230 V	59.00	63.80
D440	CONE	Recessed downlight, white	1xGU5,3 LED excl. transformer	59.00	63.80
D942	CONE	Recessed downlight, black	1xGU10 LED 230 V	59.00	63.80
D442	CONE	Recessed downlight, black	1xGU5,3 LED excl. transformer	59.00	63.80
D941	CONE	Recessed downlight, grey	1xGU10 LED 230 V	59.00	63.80
D441	CONE	Recessed downlight, grey	1xGU5,3 LED excl. transformer	59.00	63.80
D526	CPX 115	LED-recessed downlight, CRI>90, white / anti glare ring black	1x18W LED 30° 3000K CRI>90 500mA excl. driver	197.00	212.95
D527	CPX 115	LED-recessed downlight, CRI>90, white / anti glare ring chrome	1x18W LED 30° 3000K CRI>90 500mA excl. driver	197.00	212.95
D524	CPX 115	LED-recessed downlight, CRI>90, black / anti glare ring black	1x18W LED 30° 3000K CRI>90 500mA excl. driver	197.00	212.95
D525	CPX 115	LED-recessed downlight, CRI>90, black / anti glare ring chrome	1x18W LED 30° 3000K CRI>90 500mA excl. driver	197.00	212.95
D530	CPX 170	LED-recessed downlight, CRI>90, white / anti glare ring black	1x33W LED 30° 3000K CRI>90 900mA excl. driver	277.00	299.45
D531	CPX 170	LED-recessed downlight, CRI>90, white / anti glare ring chrome	1x33W LED 30° 3000K CRI>90 900mA excl. driver	277.00	299.45
D528	CPX 170	LED-recessed downlight, CRI>90, black / anti glare ring black	1x33W LED 30° 3000K CRI>90 900mA excl. driver	277.00	299.45
D529	CPX 170	LED-recessed downlight, CRI>90, black / anti glare ring chrome	1x33W LED 30° 3000K CRI>90 900mA excl. driver	277.00	299.45
D545-15	CREDO	LED-recessed downlight with LED module dim to warm, CRI>90, white	1x12,6W LED 15° dim to warm 1910K – 3000K CRI>90 350mA excl. driv	186.00	201.05
D545-25	CREDO	LED-recessed downlight with LED module dim to warm, CRI>90, white	1x12,6W LED 25° dim to warm 1910K – 3000K CRI>90 350mA excl. driv	186.00	201.05
D545-38	CREDO	LED-recessed downlight with LED module dim to warm, CRI>90, white	1x12,6W LED 38° dim to warm 1910K – 3000K CRI>90 350mA excl. driv	186.00	201.05
D545-60	CREDO	LED-recessed downlight with LED module dim to warm, CRI>90, white	1x12,6W LED 60° dim to warm 1910K – 3000K CRI>90 350mA excl. driv	186.00	201.05
D901-15	CREDO	LED-recessed downlight with LED module, CRI>90, white	1x14W LED 15° 2700K CRI>90 500mA excl. driver	204.00	220.50
D901-25	CREDO	LED-recessed downlight with LED module, CRI>90, white	1x14W LED 25° 2700K CRI>90 500mA excl. driver	204.00	220.50
D901-38	CREDO	LED-recessed downlight with LED module, CRI>90, white	1x14W LED 38° 2700K CRI>90 500mA excl. driver	204.00	220.50
D923-15	CREDO	LED-recessed downlight with LED module, CRI>90, white	1x14W LED 15° 3000K CRI>90 500mA excl. driver	204.00	220.50
D923-25	CREDO	LED-recessed downlight with LED module, CRI>90, white	1x14W LED 25° 3000K CRI>90 500mA excl. driver	204.00	220.50
D923-38	CREDO	LED-recessed downlight with LED module, CRI>90, white	1x14W LED 38° 3000K CRI>90 500mA excl. driver	204.00	220.50
D879-11	CREDO	LED-recessed downlight with LED module, CRI>90, white	1x9,3W LED 11° lens 2700K CRI>90 500mA excl. driver	142.00	153.50
D879-15	CREDO	LED-recessed downlight with LED module, CRI>90, white	1x9,3W LED 15° 2700K CRI>90 500mA excl. driver	142.00	153.50
D879-25	CREDO	LED-recessed downlight with LED module, CRI>90, white	1x9,3W LED 25° 2700K CRI>90 500mA excl. driver	142.00	153.50
D879-38	CREDO	LED-recessed downlight with LED module, CRI>90, white	1x9,3W LED 38° 2700K CRI>90 500mA excl. driver	142.00	153.50
D879-60	CREDO	LED-recessed downlight with LED module, CRI>90, white	1x9,3W LED 60° 2700K CRI>90 500mA excl. driver	142.00	153.50
D873-11	CREDO	LED-recessed downlight with LED module, CRI>90, white	1x9,3W LED 11° lens 3000K CRI>90 500mA excl. driver	142.00	153.50
D873-15	CREDO	LED-recessed downlight with LED module, CRI>90, white	1x9,3W LED 15° 3000K CRI>90 500mA excl. driver	142.00	153.50
D873-25	CREDO	LED-recessed downlight with LED module, CRI>90, white	1x9,3W LED 25° 3000K CRI>90 500mA excl. driver	142.00	153.50
D873-38	CREDO	LED-recessed downlight with LED module, CRI>90, white	1x9,3W LED 38° 3000K CRI>90 500mA excl. driver	142.00	153.50
D873-60	CREDO	LED-recessed downlight with LED module, CRI>90, white	1x9,3W LED 60° 3000K CRI>90 500mA excl. driver	142.00	153.50
D587	CREDO	Recessed downlight, white	1xGU10 LED 230 V	80.00	86.50
D549-15	CREDO	LED-recessed downlight with LED module dim to warm, CRI>90, black	1x12,6W LED 15° dim to warm 1910K – 3000K CRI>90 350mA excl. driv	186.00	201.05
D549-25	CREDO	LED-recessed downlight with LED module dim to warm, CRI>90, black	1x12,6W LED 25° dim to warm 1910K – 3000K CRI>90 350mA excl. driv	186.00	201.05
D549-38	CREDO	LED-recessed downlight with LED module dim to warm, CRI>90, black	1x12,6W LED 38° dim to warm 1910K – 3000K CRI>90 350mA excl. driv	186.00	201.05
D549-60	CREDO	LED-recessed downlight with LED module dim to warm, CRI>90, black	1x12,6W LED 60° dim to warm 1910K – 3000K CRI>90 350mA excl. driv	186.00	201.05
D910-15	CREDO	LED-recessed downlight with LED module, CRI>90, black	1x14W LED 15° 2700K CRI>90 500mA excl. driver	204.00	220.50
D910-25	CREDO	LED-recessed downlight with LED module, CRI>90, black	1x14W LED 25° 2700K CRI>90 500mA excl. driver	204.00	220.50
D910-38	CREDO	LED-recessed downlight with LED module, CRI>90, black	1x14W LED 38° 2700K CRI>90 500mA excl. driver	204.00	220.50
D984-15	CREDO	LED-recessed downlight with LED module, CRI>90, black	1x14W LED 15° 3000K CRI>90 500mA excl. driver	204.00	220.50
D984-25	CREDO	LED-recessed downlight with LED module, CRI>90, black	1x14W LED 25° 3000K CRI>90 500mA excl. driver	204.00	220.50
D984-38	CREDO	LED-recessed downlight with LED module, CRI>90, black	1x14W LED 38° 3000K CRI>90 500mA excl. driver	204.00	220.50

N° Article	Nom du luminaire	Description	Spécifications	PRIX BRUT H.T	PRIX BRUT T.T.C
D876-11	CREDO	LED-recessed downlight with LED module, CRI>90, black	1x9,3W LED 11° lens 2700K CRI>90 500mA excl. driver	142.00	153.50
D876-15	CREDO	LED-recessed downlight with LED module, CRI>90, black	1x9,3W LED 15° 2700K CRI>90 500mA excl. driver	142.00	153.50
D876-25	CREDO	LED-recessed downlight with LED module, CRI>90, black	1x9,3W LED 25° 2700K CRI>90 500mA excl. driver	142.00	153.50
D876-38	CREDO	LED-recessed downlight with LED module, CRI>90, black	1x9,3W LED 38° 2700K CRI>90 500mA excl. driver	142.00	153.50
D876-60	CREDO	LED-recessed downlight with LED module, CRI>90, black	1x9,3W LED 60° 2700K CRI>90 500mA excl. driver	142.00	153.50
D889-11	CREDO	LED-recessed downlight with LED module, CRI>90, black	1x9,3W LED 11° lens 3000K CRI>90 500mA excl. driver	142.00	153.50
D889-15	CREDO	LED-recessed downlight with LED module, CRI>90, black	1x9,3W LED 15° 3000K CRI>90 500mA excl. driver	142.00	153.50
D889-25	CREDO	LED-recessed downlight with LED module, CRI>90, black	1x9,3W LED 25° 3000K CRI>90 500mA excl. driver	142.00	153.50
D889-38	CREDO	LED-recessed downlight with LED module, CRI>90, black	1x9,3W LED 38° 3000K CRI>90 500mA excl. driver	142.00	153.50
D889-60	CREDO	LED-recessed downlight with LED module, CRI>90, black	1x9,3W LED 60° 3000K CRI>90 500mA excl. driver	142.00	153.50
D588	CREDO	Recessed downlight, black	1xGU10 LED 230 V	80.00	86.50
D120	CREDO snoot	Snoot for CREDO, white	-	17.00	18.40
D121	CREDO snoot	Snoot for CREDO, black	-	17.00	18.40
D864	CREDO ZOOM	LED-recessed fixture, CRI>90, focusable, white	1x2W LED 15°-60° 2700K CRI>90 500mA excl. driver	353.00	381.60
D871	CREDO ZOOM	LED-recessed fixture, CRI>90, focusable, white	1x2W LED 15°-60° 3000K CRI>90 500mA excl. driver	353.00	381.60
D865	CREDO ZOOM	LED-recessed fixture, CRI>90, focusable, black	1x2W LED 15°-60° 2700K CRI>90 500mA excl. driver	353.00	381.60
D872	CREDO ZOOM	LED-recessed fixture, CRI>90, focusable, black	1x2W LED 15°-60° 3000K CRI>90 500mA excl. driver	353.00	381.60
D842	DIEGO	LED-wall luminaire, CRI>90, IP54, white	2x4W LED 3000K CRI>90 incl. driver	397.00	429.15
D808	DIEGO	LED-wall luminaire, CRI>90, IP54, black	2x4W LED 3000K CRI>90 incl. driver	397.00	429.15
D838	DIVA	LED-wall and ceiling luminaire, IP54, white	15W LED 3000K incl. driver	317.00	342.70
D839	DIVA Q	LED-wall and ceiling luminaire, IP54, white	15W LED 3000K incl. driver	317.00	342.70
D319	DONUT	Recessed downlight, white	1xGU10 LED 230 V	53.00	57.30
D843	DOT	LED-inground luminaire, IP67, black	1x3W LED 40° 3000K 700mA excl. driver	180.00	194.60
D823	DOT	LED-inground luminaire, IP67, alu	1x3W LED 40° 3000K 700mA excl. driver	180.00	194.60
D824	DOT Q	LED-inground luminaire, IP67, alu	1x3W LED 40° 3000K 700mA excl. driver	180.00	194.60
D161	MICRO JUNCTION BOX IP68 - II	Micro junction box IP68, for max. 1 luminaire	-	31.00	33.50
D784	FEELING	LED-wall luminaire, black/gold	2x3W LED 3000K incl. driver	299.00	323.20
D206	FLATBOX	LED-wall luminaire, CRI>90, IP54, white	4W LED 3000K CRI>90 incl. driver	271.00	292.95
D606	FLATBOX	LED-wall luminaire, CRI>90, IP54, black	4W LED 3000K CRI>90 incl. driver	271.00	292.95
852-11-15-05	FLOW T FLEX	LED-luminaire, CRI>90, black	1x2W LED 30° 2700K CRI>90 incl. driver	440.00	475.65
852-09-15-05	FLOW T FLEX	LED-luminaire, CRI>90, black	1x2W LED 30° 3000K CRI>90 incl. driver	440.00	475.65
852-11-15-01	FLOW T FLEX	LED-luminaire, CRI>90, chrome	1x2W LED 30° 2700K CRI>90 incl. driver	370.00	399.95
852-09-15-01	FLOW T FLEX	LED-luminaire, CRI>90, chrome	1x2W LED 30° 3000K CRI>90 incl. driver	370.00	399.95
852-11-15-33	FLOW T FLEX	LED-luminaire, CRI>90, platinum	1x2W LED 30° 2700K CRI>90 incl. driver	370.00	399.95
852-09-15-33	FLOW T FLEX	LED-luminaire, CRI>90, platinum	1x2W LED 30° 3000K CRI>90 incl. driver	370.00	399.95
833-11-15-05	FLOW TQ FLEX	LED-luminaire, CRI>90, black	1x2W LED 30° 2700K CRI>90 incl. driver	517.00	558.90
833-09-15-05	FLOW TQ FLEX	LED-luminaire, CRI>90, black	1x2W LED 30° 3000K CRI>90 incl. driver	517.00	558.90
833-11-15-01	FLOW TQ FLEX	LED-luminaire, CRI>90, chrome	1x2W LED 30° 2700K CRI>90 incl. driver	448.00	484.30
833-09-15-01	FLOW TQ FLEX	LED-luminaire, CRI>90, chrome	1x2W LED 30° 3000K CRI>90 incl. driver	448.00	484.30
833-11-15-33	FLOW TQ FLEX	LED-luminaire, CRI>90, platinum	1x2W LED 30° 2700K CRI>90 incl. driver	448.00	484.30
833-09-15-33	FLOW TQ FLEX	LED-luminaire, CRI>90, platinum	1x2W LED 30° 3000K CRI>90 incl. driver	448.00	484.30
D491	FRAME 150	Recessed downlight, single, white	1xG53 LED excl. transformer	131.00	141.60
D492	FRAME 150	Recessed downlight, single, black	1xG53 LED excl. transformer	131.00	141.60
D495	FRAME 150 DUO	Recessed downlight, double, white	2xG53 LED excl. transformer	193.00	208.65
D496	FRAME 150 DUO	Recessed downlight, double, black	2xG53 LED excl. transformer	193.00	208.65
D158	FRAME 150 anti glare cone 150	Anti glare cone for FRAME 150 downlights, white	-	27.00	29.20
D159	FRAME 150 anti glare cone 150	Anti glare cone for FRAME 150 downlights, black	-	27.00	29.20
D825	FRISCO	LED-inground luminaire, CRI>90, IP67, stainless steel	1x3W LED 40° 3000K CRI>90 incl. driver	417.00	450.80
D161	MICRO JUNCTION BOX IP68 - II	Micro junction box IP68, for max. 1 luminaire	-	31.00	33.50
D162	MICRO JUNCTION BOX IP68 - IV	Micro junction box IP68, for max. 3 luminaires	-	73.00	78.90
D779	GANYMED	LED-recessed downlight, white / anti glare ring black	1x9,3W LED 32° 3000K 500mA excl. driver	150.00	162.15
D774	GANYMED	LED-recessed downlight, white / anti glare ring gold	1x9,3W LED 32° 3000K 500mA excl. driver	150.00	162.15
D780	GANYMED	LED-recessed downlight, black / anti glare ring black	1x9,3W LED 32° 3000K 500mA excl. driver	150.00	162.15
D776	GANYMED	LED-recessed downlight, black / anti glare ring gold	1x9,3W LED 32° 3000K 500mA excl. driver	150.00	162.15
D607	GEO	LED-ceiling luminaire, CRI>90, white	1x5W LED 24° 2700K CRI>90 incl. driver	244.00	263.75
D605	GEO	LED-ceiling luminaire, CRI>90, black	1x5W LED 24° 2700K CRI>90 incl. driver	244.00	263.75
D986	GINGER	LED-wall luminaire, CRI>90, dimmable, white	1x7W LED 2700K CRI>90 incl. driver phase dim	326.00	352.40

N° Article	Nom du luminaire	Description	Spécifications	PRIX BRUT H.T	PRIX BRUT T.T.C
D286	GINGER	LED-wall luminaire, CRI>90, dimmable, white	1x7W LED 3000K CRI>90 incl. driver phase dim	326.00	352.40
D645	GINO	LED-wall luminaire, CRI>90, dimmable, white	1x6W LED 2700K CRI>90 incl. driver phase dim	255.00	275.65
D245	GINO	LED-wall luminaire, CRI>90, dimmable, white	1x6W LED 3000K CRI>90 incl. driver phase dim	255.00	275.65
D647	GINO	LED-wall luminaire, CRI>90, dimmable, black	1x6W LED 2700K CRI>90 incl. driver phase dim	255.00	275.65
D646	GINO	LED-wall luminaire, CRI>90, dimmable, black	1x6W LED 3000K CRI>90 incl. driver phase dim	255.00	275.65
D287	HANG ON	LED-wall luminaire, dimmable, white	1x6W LED 3000K incl. driver phase dim	271.00	292.95
D359	HANGING BALI S	Pendant, white / anti glare ring black	1xGU10 LED 230 V	280.00	302.70
D364	HANGING BALI S	Pendant, white / anti glare ring gold	1xGU10 LED 230 V	280.00	302.70
D357	HANGING BALI S	Pendant, black / anti glare ring black	1xGU10 LED 230 V	280.00	302.70
D358	HANGING BALI S	Pendant, black / anti glare ring gold	1xGU10 LED 230 V	280.00	302.70
D379	HANGING BALI	Pendant, white / anti glare ring black	1xGU10 LED 230 V	299.00	323.20
D380	HANGING BALI	Pendant, white / anti glare ring gold	1xGU10 LED 230 V	299.00	323.20
D365	HANGING BALI	Pendant, black / anti glare ring black	1xGU10 LED 230 V	299.00	323.20
D377	HANGING BALI	Pendant, black / anti glare ring gold	1xGU10 LED 230 V	299.00	323.20
D904	HANGING BALI L	Pendant, white / anti glare ring black	1xGU10 LED 230 V	324.00	350.25
D905	HANGING BALI L	Pendant, white / anti glare ring gold	1xGU10 LED 230 V	324.00	350.25
D902	HANGING BALI L	Pendant, black / anti glare ring black	1xGU10 LED 230 V	324.00	350.25
D903	HANGING BALI L	Pendant, black / anti glare ring gold	1xGU10 LED 230 V	324.00	350.25
D-LP5	LP 5	Rectangular housing, 1200x120x45 mm, for max 5 HANGING BALI, white	230 V phase dim	542.00	585.90
D-LP5-BL	LP 5	Rectangular housing, 1200x120x45 mm, for max 5 HANGING BALI, black	230 V phase dim	542.00	585.90
D-LP7	LP 7	Round housing, ø 470x45 mm, for max 7 HANGING BALI, white	230 V phase dim	631.00	682.10
D-LP7-BL	LP 7	Round housing, ø 470x45 mm, for max 7 HANGING BALI, black	230 V phase dim	631.00	682.10
D-LP8	LP 8	Rectangular housing, 900x300x45 mm, for max 8 HANGING BALI, white	230 V phase dim	773.00	835.60
D-LP8-BL	LP 8	Rectangular housing, 900x300x45 mm, for max 8 HANGING BALI, black	230 V phase dim	773.00	835.60
D-STAR	STAR	Round housing, ø 140x35 mm, for max 6 HANGING BALI, white	230 V phase dim	302.00	326.45
D-STAR-BL	STAR	Round housing, ø 140x35 mm, for max 6 HANGING BALI, black	230 V phase dim	302.00	326.45
D136	CABLE HOLDER	Cable holder for ø 2-6mm wires, for decentralised mounting, white	-	48.00	51.90
D137	CABLE HOLDER	Cable holder for ø 2-6mm wires, for decentralised mounting, black	-	48.00	51.90
D106	CABLE KIT 5 HANGING BALI	Special length KIT 5.000 mm for HANGING BALI	-	68.00	73.50
D460-1.0	HANGING CLIPPO	LED-pendant, CRI>90, dim to warm, cable length 1000 mm, white / anti glare ring white	2x6,3W LED 33°/90° dim to warm 1910K – 3000K CRI>90 incl. driver pha	533.00	576.15
D460-1.0-DALI	HANGING CLIPPO	LED-pendant, CRI>90, dim to warm, cable length 1000 mm, white / anti glare ring white	2x6,3W LED 33°/90° dim to warm 1910K – 3000K CRI>90 incl. driver DA	624.00	674.55
D460-1.5	HANGING CLIPPO	LED-pendant, CRI>90, dim to warm, cable length 1500 mm, white / anti glare ring white	2x6,3W LED 33°/90° dim to warm 1910K – 3000K CRI>90 incl. driver pha	533.00	576.15
D460-1.5-DALI	HANGING CLIPPO	LED-pendant, CRI>90, dim to warm, cable length 1500 mm, white / anti glare ring white	2x6,3W LED 33°/90° dim to warm 1910K – 3000K CRI>90 incl. driver DA	624.00	674.55
D461-1.0	HANGING CLIPPO	LED-pendant, CRI>90, dim to warm, cable length 1000 mm, white / anti glare ring gold	2x6,3W LED 33°/90° dim to warm 1910K – 3000K CRI>90 incl. driver pha	533.00	576.15
D461-1.0-DALI	HANGING CLIPPO	LED-pendant, CRI>90, dim to warm, cable length 1000 mm, white / anti glare ring gold	2x6,3W LED 33°/90° dim to warm 1910K – 3000K CRI>90 incl. driver DA	624.00	674.55
D461-1.5	HANGING CLIPPO	LED-pendant, CRI>90, dim to warm, cable length 1500 mm, white / anti glare ring gold	2x6,3W LED 33°/90° dim to warm 1910K – 3000K CRI>90 incl. driver pha	533.00	576.15
D461-1.5-DALI	HANGING CLIPPO	LED-pendant, CRI>90, dim to warm, cable length 1500 mm, white / anti glare ring gold	2x6,3W LED 33°/90° dim to warm 1910K – 3000K CRI>90 incl. driver DA	624.00	674.55
D462-1.0	HANGING CLIPPO	LED-pendant, CRI>90, dim to warm, cable length 1000 mm, black / anti glare ring black	2x6,3W LED 33°/90° dim to warm 1910K – 3000K CRI>90 incl. driver pha	533.00	576.15
D462-1.0-DALI	HANGING CLIPPO	LED-pendant, CRI>90, dim to warm, cable length 1000 mm, black / anti glare ring black	2x6,3W LED 33°/90° dim to warm 1910K – 3000K CRI>90 incl. driver DA	624.00	674.55
D462-1.5	HANGING CLIPPO	LED-pendant, CRI>90, dim to warm, cable length 1500 mm, black / anti glare ring black	2x6,3W LED 33°/90° dim to warm 1910K – 3000K CRI>90 incl. driver pha	533.00	576.15
D462-1.5-DALI	HANGING CLIPPO	LED-pendant, CRI>90, dim to warm, cable length 1500 mm, black / anti glare ring black	2x6,3W LED 33°/90° dim to warm 1910K – 3000K CRI>90 incl. driver DA	624.00	674.55
D463-1.0	HANGING CLIPPO	LED-pendant, CRI>90, dim to warm, cable length 1000 mm, black / anti glare ring gold	2x6,3W LED 33°/90° dim to warm 1910K – 3000K CRI>90 incl. driver pha	533.00	576.15
D463-1.0-DALI	HANGING CLIPPO	LED-pendant, CRI>90, dim to warm, cable length 1000 mm, black / anti glare ring gold	2x6,3W LED 33°/90° dim to warm 1910K – 3000K CRI>90 incl. driver DA	624.00	674.55
D463-1.5	HANGING CLIPPO	LED-pendant, CRI>90, dim to warm, cable length 1500 mm, black / anti glare ring gold	2x6,3W LED 33°/90° dim to warm 1910K – 3000K CRI>90 incl. driver pha	533.00	576.15
D463-1.5-DALI	HANGING CLIPPO	LED-pendant, CRI>90, dim to warm, cable length 1500 mm, black / anti glare ring gold	2x6,3W LED 33°/90° dim to warm 1910K – 3000K CRI>90 incl. driver DA	624.00	674.55
D378	CLIPPO SYSTEM - PLATE 60	Rectangular housing, 600x100x15 mm, for 2 HANGING CLIPPO, white	230 V phase dim	153.00	165.40
D388	CLIPPO SYSTEM - PLATE 60	Rectangular housing, 600x100x15 mm, for 2 HANGING CLIPPO, black	230 V phase dim	153.00	165.40
D254	CLIPPO SYSTEM - END CAPS	End piece set (1 pair) for CLIPPO SYSTEM - PLATE 60, white	-	57.00	61.60
D268	CLIPPO SYSTEM - END CAPS	End piece set (1 pair) for CLIPPO SYSTEM - PLATE 60, black	-	57.00	61.60
D101	CABLE KIT 5 HANGING CLIPPO	Special length KIT 5.000 mm for HANGING CLIPPO	-	179.00	193.50
D146	CLIPPO honey comb louver	Honey comb louver for for CLIPPO, CLIPPO DUO, CLIPPO EP and HANGING CLIPPO, black	-	25.00	27.05
DH-D998	CLIPPO anti glare ring	Magnetic anti glare ring for all CLIPPO versions, white	-	18.00	19.45
DH-D997	CLIPPO anti glare ring	Magnetic anti glare ring for all CLIPPO versions, black	-	18.00	19.45
DH-D999	CLIPPO anti glare ring	Magnetic anti glare ring for all CLIPPO versions, gold	-	18.00	19.45
DH-D594	CLIPPO reflector	Reflector 24° for HANGING CLIPPO	-	12.00	12.95
DH-D596	CLIPPO reflector	Reflector 50° for HANGING CLIPPO	-	12.00	12.95
D211	HANGING PIPER	LED-pendant, CRI>90, white	1x15W LED 3000K CRI>90 incl. driver	724.00	782.65

N° Article	Nom du luminaire	Description	Spécifications	PRIX BRUT H.T	PRIX BRUT T.T.C
D711	HANGING PIPER dim	LED-pendant, CRI>90, dimmable, white	1x15W LED 3000K CRI>90 incl. driver phase dim	760.00	821.55
D679	HANGING SOHO	Pendant, black	1xE27 LED 230 V	271.00	292.95
D681	HANGING SOHO	Pendant, brass	1xE27 LED 230 V	280.00	302.70
D-LP5	LP 5	Rectangular housing, 1200x120x45 mm, for max 5 HANGING SOHO, white	230 V phase dim	542.00	585.90
D-LP5-BL	LP 5	Rectangular housing, 1200x120x45 mm, for max 5 HANGING SOHO, black	230 V phase dim	542.00	585.90
D-LP7	LP 7	Round housing, ø 470x45 mm, for max 7 HANGING SOHO, white	230 V phase dim	631.00	682.10
D-LP7-BL	LP 7	Round housing, ø 470x45 mm, for max 7 HANGING SOHO, black	230 V phase dim	631.00	682.10
D-LP8	LP 8	Rectangular housing, 900x300x45 mm, for max 8 HANGING SOHO, white	230 V phase dim	773.00	835.60
D-LP8-BL	LP 8	Rectangular housing, 900x300x45 mm, for max 8 HANGING SOHO, black	230 V phase dim	773.00	835.60
D-STAR	STAR	Round housing, ø 140x35 mm, for max 6 HANGING SOHO, white	230 V phase dim	302.00	326.45
D-STAR-BL	STAR	Round housing, ø 140x35 mm, for max 6 HANGING SOHO, black	230 V phase dim	302.00	326.45
D136	CABLE HOLDER	Cable holder for ø 2-6mm wires, for decentralised mounting, white	-	48.00	51.90
D137	CABLE HOLDER	Cable holder for ø 2-6mm wires, for decentralised mounting, black	-	48.00	51.90
D102	CABLE KIT 5 HANGING SOHO	Special length KIT 5.000 mm for HANGING SOHO	-	68.00	73.50
D625	HARMONY	Wall luminaire with shade cream, chrome	1xE27 LED 230 V	240.00	259.45
D626	HARMONY LED FLEX	Wall luminaire with shade cream and LED-fixture, chrome	1xE27 LED + 1x1W LED 40° 3000K incl. driver / 230 V	477.00	515.65
D288	HENRY	LED-wall luminaire, CRI>90, white	9,5W LED 3000K CRI>90 incl. driver	368.00	397.80
D439	HENRY dim	LED-wall luminaire, CRI>90, dimmable, white	9,5W LED 3000K CRI>90 incl. driver phase dim	402.00	434.55
D791	IDOWN 13	LED-recessed downlight, CRI>90, IP54, white	1x13W LED 30° 3000K CRI>90 350mA excl. driver	230.00	248.65
D792	IDOWN 26	LED-recessed downlight, CRI>90, IP54, white	1x26W LED 30° 3000K CRI>90 700mA excl. driver	306.00	330.80
D594	KELLY	LED-spotlight with 3-phase universal adapter, CRI>90, dimmable, white	1x15W LED 15°-90° 2700K CRI>90 incl. driver phase dim	590.00	637.80
D598	KELLY	LED-spotlight with 3-phase universal adapter, CRI>90, dimmable, white	1x15W LED 15°-90° 3000K CRI>90 incl. driver phase dim	590.00	637.80
D593	KELLY	LED-spotlight with 3-phase universal adapter, CRI>90, dimmable, black	1x15W LED 15°-90° 2700K CRI>90 incl. driver phase dim	590.00	637.80
D597	KELLY	LED-spotlight with 3-phase universal adapter, CRI>90, dimmable, black	1x15W LED 15°-90° 3000K CRI>90 incl. driver phase dim	590.00	637.80
D732-15	KENT	LED-spotlight with 3-phase universal adapter, CRI>90, dimmable, white	1x30W LED 15° 3000K CRI>90 incl. driver phase dim	451.00	487.55
D732-26	KENT	LED-spotlight with 3-phase universal adapter, CRI>90, dimmable, white	1x30W LED 26° 3000K CRI>90 incl. driver phase dim	451.00	487.55
D732-38	KENT	LED-spotlight with 3-phase universal adapter, CRI>90, dimmable, white	1x30W LED 38° 3000K CRI>90 incl. driver phase dim	451.00	487.55
D742-15	KENT	LED-spotlight with 3-phase universal adapter, CRI>90, dimmable, white	1x30W LED 15° 4000K CRI>90 incl. driver phase dim	451.00	487.55
D742-26	KENT	LED-spotlight with 3-phase universal adapter, CRI>90, dimmable, white	1x30W LED 26° 4000K CRI>90 incl. driver phase dim	451.00	487.55
D742-38	KENT	LED-spotlight with 3-phase universal adapter, CRI>90, dimmable, white	1x30W LED 38° 4000K CRI>90 incl. driver phase dim	451.00	487.55
D734-15	KENT	LED-spotlight with 3-phase universal adapter, CRI>90, dimmable, black	1x30W LED 15° 3000K CRI>90 incl. driver phase dim	451.00	487.55
D734-26	KENT	LED-spotlight with 3-phase universal adapter, CRI>90, dimmable, black	1x30W LED 26° 3000K CRI>90 incl. driver phase dim	451.00	487.55
D734-38	KENT	LED-spotlight with 3-phase universal adapter, CRI>90, dimmable, black	1x30W LED 38° 3000K CRI>90 incl. driver phase dim	451.00	487.55
D745-15	KENT	LED-spotlight with 3-phase universal adapter, CRI>90, dimmable, black	1x30W LED 15° 4000K CRI>90 incl. driver phase dim	451.00	487.55
D745-26	KENT	LED-spotlight with 3-phase universal adapter, CRI>90, dimmable, black	1x30W LED 26° 4000K CRI>90 incl. driver phase dim	451.00	487.55
D745-38	KENT	LED-spotlight with 3-phase universal adapter, CRI>90, dimmable, black	1x30W LED 38° 4000K CRI>90 incl. driver phase dim	451.00	487.55
D736-15	KENT BAKERY	LED-spotlight with 3-phase universal adapter for bakery products, white	1x32W LED 15° 2500K incl. driver	535.00	578.35
D736-26	KENT BAKERY	LED-spotlight with 3-phase universal adapter for bakery products, white	1x32W LED 26° 2500K incl. driver	535.00	578.35
D736-38	KENT BAKERY	LED-spotlight with 3-phase universal adapter for bakery products, white	1x32W LED 38° 2500K incl. driver	535.00	578.35
D739-15	KENT BAKERY	LED-spotlight with 3-phase universal adapter for bakery products, black	1x32W LED 15° 2500K incl. driver	535.00	578.35
D739-26	KENT BAKERY	LED-spotlight with 3-phase universal adapter for bakery products, black	1x32W LED 26° 2500K incl. driver	535.00	578.35
D739-38	KENT BAKERY	LED-spotlight with 3-phase universal adapter for bakery products, black	1x32W LED 38° 2500K incl. driver	535.00	578.35
D766-15	KENT MEAT	LED-spotlight with 3-phase universal adapter for meat products, white	1x32W LED 15° 1750K incl. driver	535.00	578.35
D766-26	KENT MEAT	LED-spotlight with 3-phase universal adapter for meat products, white	1x32W LED 26° 1750K incl. driver	535.00	578.35
D766-38	KENT MEAT	LED-spotlight with 3-phase universal adapter for meat products, white	1x32W LED 38° 1750K incl. driver	535.00	578.35
D769-15	KENT MEAT	LED-spotlight with 3-phase universal adapter for meat products, black	1x32W LED 15° 1750K incl. driver	535.00	578.35
D769-26	KENT MEAT	LED-spotlight with 3-phase universal adapter for meat products, black	1x32W LED 26° 1750K incl. driver	535.00	578.35
D769-38	KENT MEAT	LED-spotlight with 3-phase universal adapter for meat products, black	1x32W LED 38° 1750K incl. driver	535.00	578.35
D140	KENT antiglare shade	Antiglare shade for KENT, KENT BAKERY and KENT MEAT, black	-	88.00	95.15
D141	KENT snoot	Snoot for KENT, KENT BAKERY and KENT MEAT, black	-	36.00	38.90
D142	KENT honey comb louver	Honey comb louver for KENT, KENT BAKERY and KENT MEAT, black	-	36.00	38.90
D165	KENT filter linear diffusion	Linear diffusion filter for KENT, KENT BAKERY and KENT MEAT	-	52.00	56.20
D166	KENT filter prismatic diffusion	Prismatic diffusion filter for KENT, KENT BAKERY and KENT MEAT	-	52.00	56.20
D978-10	KENT S	LED-spotlight with 3-phase universal adapter, CRI>90, dimmable, white	1x15W LED 10° 2700K CRI>90 incl. driver phase dim	344.00	371.85
D978-18	KENT S	LED-spotlight with 3-phase universal adapter, CRI>90, dimmable, white	1x15W LED 18° 2700K CRI>90 incl. driver phase dim	344.00	371.85
D978-30	KENT S	LED-spotlight with 3-phase universal adapter, CRI>90, dimmable, white	1x15W LED 30° 2700K CRI>90 incl. driver phase dim	344.00	371.85
D978-38	KENT S	LED-spotlight with 3-phase universal adapter, CRI>90, dimmable, white	1x15W LED 38° 2700K CRI>90 incl. driver phase dim	344.00	371.85

N° Article	Nom du luminaire	Description	Spécifications	PRIX BRUT H.T	PRIX BRUT T.T.C
D405-38	KYO	LED-recessed downlight with LED module, CRI>90, white	1x14W LED 38° 2700K CRI>90 500mA excl. driver	166.00	179.45
D409-15	KYO	LED-recessed downlight with LED module, CRI>90, white	1x14W LED 15° 3000K CRI>90 500mA excl. driver	166.00	179.45
D409-25	KYO	LED-recessed downlight with LED module, CRI>90, white	1x14W LED 25° 3000K CRI>90 500mA excl. driver	166.00	179.45
D409-38	KYO	LED-recessed downlight with LED module, CRI>90, white	1x14W LED 38° 3000K CRI>90 500mA excl. driver	166.00	179.45
D859-11	KYO	LED-recessed downlight with LED module, CRI>90, white	1x9,3W LED 11° lens 2700K CRI>90 500mA excl. driver	122.00	131.90
D859-15	KYO	LED-recessed downlight with LED module, CRI>90, white	1x9,3W LED 15° 2700K CRI>90 500mA excl. driver	122.00	131.90
D859-25	KYO	LED-recessed downlight with LED module, CRI>90, white	1x9,3W LED 25° 2700K CRI>90 500mA excl. driver	122.00	131.90
D859-38	KYO	LED-recessed downlight with LED module, CRI>90, white	1x9,3W LED 38° 2700K CRI>90 500mA excl. driver	122.00	131.90
D859-60	KYO	LED-recessed downlight with LED module, CRI>90, white	1x9,3W LED 60° 2700K CRI>90 500mA excl. driver	122.00	131.90
D853-11	KYO	LED-recessed downlight with LED module, CRI>90, white	1x9,3W LED 11° lens 3000K CRI>90 500mA excl. driver	122.00	131.90
D853-15	KYO	LED-recessed downlight with LED module, CRI>90, white	1x9,3W LED 15° 3000K CRI>90 500mA excl. driver	122.00	131.90
D853-25	KYO	LED-recessed downlight with LED module, CRI>90, white	1x9,3W LED 25° 3000K CRI>90 500mA excl. driver	122.00	131.90
D853-38	KYO	LED-recessed downlight with LED module, CRI>90, white	1x9,3W LED 38° 3000K CRI>90 500mA excl. driver	122.00	131.90
D853-60	KYO	LED-recessed downlight with LED module, CRI>90, white	1x9,3W LED 60° 3000K CRI>90 500mA excl. driver	122.00	131.90
D403	KYO	Recessed downlight, white	1xGU10 LED 230 V	59.00	63.80
D469-15	KYO	LED-recessed downlight with LED module dim to warm, CRI>90, black	1x12,6W LED 15° dim to warm 1910K – 3000K CRI>90 350mA excl. driv	163.00	176.20
D469-25	KYO	LED-recessed downlight with LED module dim to warm, CRI>90, black	1x12,6W LED 25° dim to warm 1910K – 3000K CRI>90 350mA excl. driv	163.00	176.20
D469-38	KYO	LED-recessed downlight with LED module dim to warm, CRI>90, black	1x12,6W LED 38° dim to warm 1910K – 3000K CRI>90 350mA excl. driv	163.00	176.20
D469-60	KYO	LED-recessed downlight with LED module dim to warm, CRI>90, black	1x12,6W LED 60° dim to warm 1910K – 3000K CRI>90 350mA excl. driv	163.00	176.20
D408-15	KYO	LED-recessed downlight with LED module, CRI>90, black	1x14W LED 15° 2700K CRI>90 500mA excl. driver	166.00	179.45
D408-25	KYO	LED-recessed downlight with LED module, CRI>90, black	1x14W LED 25° 2700K CRI>90 500mA excl. driver	166.00	179.45
D408-38	KYO	LED-recessed downlight with LED module, CRI>90, black	1x14W LED 38° 2700K CRI>90 500mA excl. driver	166.00	179.45
D410-15	KYO	LED-recessed downlight with LED module, CRI>90, black	1x14W LED 15° 3000K CRI>90 500mA excl. driver	166.00	179.45
D410-25	KYO	LED-recessed downlight with LED module, CRI>90, black	1x14W LED 25° 3000K CRI>90 500mA excl. driver	166.00	179.45
D410-38	KYO	LED-recessed downlight with LED module, CRI>90, black	1x14W LED 38° 3000K CRI>90 500mA excl. driver	166.00	179.45
D856-11	KYO	LED-recessed downlight with LED module, CRI>90, black	1x9,3W LED 11° lens 2700K CRI>90 500mA excl. driver	122.00	131.90
D856-15	KYO	LED-recessed downlight with LED module, CRI>90, black	1x9,3W LED 15° 2700K CRI>90 500mA excl. driver	122.00	131.90
D856-25	KYO	LED-recessed downlight with LED module, CRI>90, black	1x9,3W LED 25° 2700K CRI>90 500mA excl. driver	122.00	131.90
D856-38	KYO	LED-recessed downlight with LED module, CRI>90, black	1x9,3W LED 38° 2700K CRI>90 500mA excl. driver	122.00	131.90
D856-60	KYO	LED-recessed downlight with LED module, CRI>90, black	1x9,3W LED 60° 2700K CRI>90 500mA excl. driver	122.00	131.90
D886-11	KYO	LED-recessed downlight with LED module, CRI>90, black	1x9,3W LED 11° lens 3000K CRI>90 500mA excl. driver	122.00	131.90
D886-15	KYO	LED-recessed downlight with LED module, CRI>90, black	1x9,3W LED 15° 3000K CRI>90 500mA excl. driver	122.00	131.90
D886-25	KYO	LED-recessed downlight with LED module, CRI>90, black	1x9,3W LED 25° 3000K CRI>90 500mA excl. driver	122.00	131.90
D886-38	KYO	LED-recessed downlight with LED module, CRI>90, black	1x9,3W LED 38° 3000K CRI>90 500mA excl. driver	122.00	131.90
D886-60	KYO	LED-recessed downlight with LED module, CRI>90, black	1x9,3W LED 60° 3000K CRI>90 500mA excl. driver	122.00	131.90
D404	KYO	Recessed downlight, black	1xGU10 LED 230 V	59.00	63.80
D877	KYO ZOOOM	LED-recessed fixture, CRI>90, focusable, white	1x2W LED 15°-60° 2700K CRI>90 500mA excl. driver	335.00	362.15
D880	KYO ZOOOM	LED-recessed fixture, CRI>90, focusable, white	1x2W LED 15°-60° 3000K CRI>90 500mA excl. driver	335.00	362.15
D878	KYO ZOOOM	LED-recessed fixture, CRI>90, focusable, black	1x2W LED 15°-60° 2700K CRI>90 500mA excl. driver	335.00	362.15
D881	KYO ZOOOM	LED-recessed fixture, CRI>90, focusable, black	1x2W LED 15°-60° 3000K CRI>90 500mA excl. driver	335.00	362.15
D621	LARA	LED-fixture, CRI>90, black	1x7W LED 15° 2700K CRI>90 incl. driver	339.00	366.45
D290	LEDA	LED-recessed fixture, CRI>90, white	1x2,4W LED 30° 3000K CRI>90 700mA excl. driver	75.00	81.10
D296	LEDA	LED-recessed fixture, CRI>90, black	1x2,4W LED 30° 3000K CRI>90 700mA excl. driver	75.00	81.10
D289	LEDA	LED-recessed fixture, CRI>90, alu	1x2,4W LED 30° 3000K CRI>90 700mA excl. driver	75.00	81.10
D840	LIBERTY	LED-wall and ceiling luminaire, CRI>90, dimmable, IP54, white	11W LED 3000K CRI>90 incl. driver phase dim	470.00	508.05
D844	LIBERTY plus	LED-wall and ceiling luminaire, CRI>90, dimmable, IP54, white	11W LED 3000K CRI>90 incl. driver phase dim	499.00	539.40
D371	LIGHT BOX 1	Ceiling luminaire, single, white	1xGU10 LED 230 V	142.00	153.50
D367	LIGHT BOX 1	Ceiling luminaire, single, black	1xGU10 LED 230 V	142.00	153.50
D361	LIGHT BOX 1	Ceiling luminaire, single, grey	1xGU10 LED 230 V	142.00	153.50
D372	LIGHT BOX 2	Ceiling luminaire, double, white	2xGU10 LED 230 V	211.00	228.10
D368	LIGHT BOX 2	Ceiling luminaire, double, black	2xGU10 LED 230 V	211.00	228.10
D362	LIGHT BOX 2	Ceiling luminaire, double, grey	2xGU10 LED 230 V	211.00	228.10
D373	LIGHT BOX 3	Ceiling luminaire, triple, white	3xGU10 LED 230 V	280.00	302.70
D369	LIGHT BOX 3	Ceiling luminaire, triple, black	3xGU10 LED 230 V	280.00	302.70
D363	LIGHT BOX 3	Ceiling luminaire, triple, grey	3xGU10 LED 230 V	280.00	302.70
D370	LIGHT BOX 4	Ceiling luminaire, quad, white	4xGU10 LED 230 V	344.00	371.85
D360	LIGHT BOX 4	Ceiling luminaire, quad, grey	4xGU10 LED 230 V	344.00	371.85

N° Article	Nom du luminaire	Description	Spécifications	PRIX BRUT H.T	PRIX BRUT T.T.C
D374	LIGHT BOX SOFT 1	Ceiling luminaire, single, white	1xGU10 LED 230 V	171.00	184.85
D385	LIGHT BOX SOFT 1	Ceiling luminaire, single, black	1xGU10 LED 230 V	171.00	184.85
D375	LIGHT BOX SOFT 2	Ceiling luminaire, double, white	2xGU10 LED 230 V	248.00	268.10
D386	LIGHT BOX SOFT 2	Ceiling luminaire, double, black	2xGU10 LED 230 V	248.00	268.10
D376	LIGHT BOX SOFT 3	Ceiling luminaire, triple, white	3xGU10 LED 230 V	346.00	374.05
D387	LIGHT BOX SOFT 3	Ceiling luminaire, triple, black	3xGU10 LED 230 V	346.00	374.05
D994	LIGHT HOUSE 1	LED-ceiling luminaire, CRI>90, single, dimmable, H=130 mm, white	1x9,3W LED 32° 2700K CRI>90 incl. driver phase dim	279.00	301.60
D999	LIGHT HOUSE 1	LED-ceiling luminaire, CRI>90, single, dimmable, H=130 mm, black	1x9,3W LED 32° 2700K CRI>90 incl. driver phase dim	279.00	301.60
D996	LIGHT HOUSE 2	LED-ceiling luminaire, CRI>90, double, dimmable, H=130 mm, white	2x9,3W LED 32° 2700K CRI>90 incl. driver phase dim	471.00	509.15
D998	LIGHT HOUSE 2	LED-ceiling luminaire, CRI>90, double, dimmable, H=130 mm, black	2x9,3W LED 32° 2700K CRI>90 incl. driver phase dim	471.00	509.15
D255	LILLI	LED-pendant, CRI>90, white	1x7W LED 33° 3000K CRI>90 incl. driver	375.00	405.40
D255dim	LILLI	LED-pendant, CRI>90, dimmable, white	1x7W LED 33° 3000K CRI>90 incl. driver phase dim	430.00	464.85
D-LP5	LP 5	Rectangular housing, 1200x120x45 mm, for max 5 LILLI, white	230 V phase dim	542.00	585.90
D-LP5-BL	LP 5	Rectangular housing, 1200x120x45 mm, for max 5 LILLI, black	230 V phase dim	542.00	585.90
D-LP7	LP 7	Round housing, ø 470x45 mm, for max 7 LILLI, white	230 V phase dim	631.00	682.10
D-LP7-BL	LP 7	Round housing, ø 470x45 mm, for max 7 LILLI, black	230 V phase dim	631.00	682.10
D-LP8	LP 8	Rectangular housing, 900x300x45 mm, for max 8 LILLI, white	230 V phase dim	773.00	835.60
D-LP8-BL	LP 8	Rectangular housing, 900x300x45 mm, for max 8 LILLI, black	230 V phase dim	773.00	835.60
D-STAR	STAR	Round housing, ø 140x35 mm, for max 3 LILLI, white	230 V phase dim	302.00	326.45
D-STAR-BL	STAR	Round housing, ø 140x35 mm, for max 3 LILLI, black	230 V phase dim	302.00	326.45
D136	CABLE HOLDER	Cable holder for ø 2-6mm wires, for decentralised mounting, white	-	48.00	51.90
D137	CABLE HOLDER	Cable holder for ø 2-6mm wires, for decentralised mounting, black	-	48.00	51.90
D107	CABLE KIT 5 LILLI	Special length KIT 5.000 mm for LILLI	-	88.00	95.15
D265	LINEA 1	LED-recessed downlight, CRI>95, white	1x2W LED 34° 2700K CRI>95 700mA excl. driver	89.00	96.20
D501	LINEA 1	LED-recessed downlight, CRI>95, white	1x2W LED 34° 3000K CRI>95 700mA excl. driver	89.00	96.20
D263	LINEA 1	LED-recessed downlight, CRI>95, black	1x2W LED 34° 2700K CRI>95 700mA excl. driver	89.00	96.20
D500	LINEA 1	LED-recessed downlight, CRI>95, black	1x2W LED 34° 3000K CRI>95 700mA excl. driver	89.00	96.20
D277	LINEA 5	LED-recessed downlight, CRI>95, white	5x2W LED 48° 2700K CRI>95 700mA excl. driver	186.00	201.05
D533	LINEA 5	LED-recessed downlight, CRI>95, white	5x2W LED 48° 3000K CRI>95 700mA excl. driver	186.00	201.05
D276	LINEA 5	LED-recessed downlight, CRI>95, black	5x2W LED 48° 2700K CRI>95 700mA excl. driver	186.00	201.05
D532	LINEA 5	LED-recessed downlight, CRI>95, black	5x2W LED 48° 3000K CRI>95 700mA excl. driver	186.00	201.05
D267	LINEA 5 FLEX	LED-recessed downlight, CRI>95, adjustable, white	5x2W LED 48° 2700K CRI>95 700mA excl. driver	204.00	220.50
D535	LINEA 5 FLEX	LED-recessed downlight, CRI>95, adjustable, white	5x2W LED 48° 3000K CRI>95 700mA excl. driver	204.00	220.50
D266	LINEA 5 FLEX	LED-recessed downlight, CRI>95, adjustable, black	5x2W LED 48° 2700K CRI>95 700mA excl. driver	204.00	220.50
D534	LINEA 5 FLEX	LED-recessed downlight, CRI>95, adjustable, black	5x2W LED 48° 3000K CRI>95 700mA excl. driver	204.00	220.50
D272	LINEA 10	LED-recessed downlight, CRI>95, white	10x2W LED 48° 2700K CRI>95 700mA excl. driver	317.00	342.70
D354	LINEA 10	LED-recessed downlight, CRI>95, white	10x2W LED 48° 3000K CRI>95 700mA excl. driver	317.00	342.70
D271	LINEA 10	LED-recessed downlight, CRI>95, black	10x2W LED 48° 2700K CRI>95 700mA excl. driver	317.00	342.70
D353	LINEA 10	LED-recessed downlight, CRI>95, black	10x2W LED 48° 3000K CRI>95 700mA excl. driver	317.00	342.70
D275	LINEA WALLWASHER	LED-recessed downlight, CRI>95, wallwasher, white	16W LED 2700K CRI>95 700mA excl. driver	244.00	263.75
D537	LINEA WALLWASHER	LED-recessed downlight, CRI>95, wallwasher, white	16W LED 3000K CRI>95 700mA excl. driver	244.00	263.75
D273	LINEA WALLWASHER	LED-recessed downlight, CRI>95, wallwasher, black	16W LED 2700K CRI>95 700mA excl. driver	244.00	263.75
D536	LINEA WALLWASHER	LED-recessed downlight, CRI>95, wallwasher, black	16W LED 3000K CRI>95 700mA excl. driver	244.00	263.75
D789	LUCKY STAR	LED-wall recessed luminaire, CRI>90, dimmable, white	1x4W LED 3000K CRI>90 230 V phase dim	150.00	162.15
1555-04	LUCKY STAR mounting box 60	Mounting box for LUCKY STAR	-	2.00	2.15
D762-18	LUCY	LED-spotlight with 3-phase universal adapter, CRI>90, white	1x10W LED 18° 2700K CRI>90 incl. driver	233.00	251.85
D762-38	LUCY	LED-spotlight with 3-phase universal adapter, CRI>90, white	1x10W LED 38° 2700K CRI>90 incl. driver	233.00	251.85
D762-60	LUCY	LED-spotlight with 3-phase universal adapter, CRI>90, white	1x10W LED 60° 2700K CRI>90 incl. driver	233.00	251.85
D722-18	LUCY	LED-spotlight with 3-phase universal adapter, CRI>90, white	1x10W LED 18° 3000K CRI>90 incl. driver	233.00	251.85
D722-38	LUCY	LED-spotlight with 3-phase universal adapter, CRI>90, white	1x10W LED 38° 3000K CRI>90 incl. driver	233.00	251.85
D722-60	LUCY	LED-spotlight with 3-phase universal adapter, CRI>90, white	1x10W LED 60° 3000K CRI>90 incl. driver	233.00	251.85
D772-18	LUCY	LED-spotlight with 3-phase universal adapter, CRI>90, black	1x10W LED 18° 2700K CRI>90 incl. driver	233.00	251.85
D772-38	LUCY	LED-spotlight with 3-phase universal adapter, CRI>90, black	1x10W LED 38° 2700K CRI>90 incl. driver	233.00	251.85
D772-60	LUCY	LED-spotlight with 3-phase universal adapter, CRI>90, black	1x10W LED 60° 2700K CRI>90 incl. driver	233.00	251.85
D719-18	LUCY	LED-spotlight with 3-phase universal adapter, CRI>90, black	1x10W LED 18° 3000K CRI>90 incl. driver	233.00	251.85
D719-38	LUCY	LED-spotlight with 3-phase universal adapter, CRI>90, black	1x10W LED 38° 3000K CRI>90 incl. driver	233.00	251.85
D719-60	LUCY	LED-spotlight with 3-phase universal adapter, CRI>90, black	1x10W LED 60° 3000K CRI>90 incl. driver	233.00	251.85

N° Article	Nom du luminaire	Description	Spécifications	PRIX BRUT H.T	PRIX BRUT T.T.C
D691	MIRA WALLWASHER	LED-recessed downlight, wallwasher, with LED module, CRI>90, black	1x9,3W LED 3000K CRI>90 500mA excl. driver	150.00	162.15
D715	MIRA WALLWASHER	Recessed downlight, wallwasher, black	1xGU10 LED 230 V	98.00	105.95
D786	MK 90	LED-recessed downlight, IP44, white	1x10W LED 40° 3000K incl. driver	111.00	120.00
D787	MK 110	LED-recessed downlight, IP44, white	1x10W LED 40° 3000K incl. driver	138.00	149.20
D749	MK Q	LED-recessed downlight, IP44, white	1x10W LED 40° 3000K incl. driver	138.00	149.20
D748	NEWTON 35	LED-luminaire, CRI>90, dimmable, connector external, IP54, white	1x8W LED 30° 3000K CRI>90 230 V phase dim	133.00	143.75
D848	NEWTON 35	LED-luminaire, CRI>90, dimmable, connector external, IP54, black	1x8W LED 30° 3000K CRI>90 230 V phase dim	133.00	143.75
D788	NEWTON 35	LED-luminaire, CRI>90, dimmable, connector external, IP54, grey	1x8W LED 30° 3000K CRI>90 230 V phase dim	133.00	143.75
D948	NEWTON 55	LED-luminaire, CRI>90, dimmable, IP54, white	1x8W LED 30° 3000K CRI>90 230 V phase dim	142.00	153.50
D868	NEWTON 55	LED-luminaire, CRI>90, dimmable, IP54, black	1x8W LED 30° 3000K CRI>90 230 V phase dim	142.00	153.50
D988	NEWTON 55	LED-luminaire, CRI>90, dimmable, IP54, grey	1x8W LED 30° 3000K CRI>90 230 V phase dim	142.00	153.50
D911	NO FRAME 80	Recessed downlight, single, white	1xGU10 LED 230 V	131.00	141.60
D411	NO FRAME 80	Recessed downlight, single, white	1xGU5,3 LED excl. transformer	122.00	131.90
D912	NO FRAME 80	Recessed downlight, single, black	1xGU10 LED 230 V	131.00	141.60
D412	NO FRAME 80	Recessed downlight, single, black	1xGU5,3 LED excl. transformer	122.00	131.90
D111	NO FRAME 80 kit 80	Recessed frame for D411 and D911, white	-	23.00	24.85
D112	NO FRAME 80 kit 80	Recessed frame for D412 and D912, black	-	23.00	24.85
D915	NO FRAME 80 DUO	Recessed downlight, double, white	2xGU10 LED 230 V	208.00	224.85
D415	NO FRAME 80 DUO	Recessed downlight, double, white	2xGU5,3 LED excl. transformer	199.00	215.10
D916	NO FRAME 80 DUO	Recessed downlight, double, black	2xGU10 LED 230 V	208.00	224.85
D416	NO FRAME 80 DUO	Recessed downlight, double, black	2xGU5,3 LED excl. transformer	199.00	215.10
D115	NO FRAME 80 DUO kit 80 duo	Recessed frame for D415 and D915, white	-	27.00	29.20
D116	NO FRAME 80 DUO kit 80 duo	Recessed frame for D416 and D916, black	-	27.00	29.20
D932	NO FRAME 80 ROUND	Recessed downlight, single, white	1xGU10 LED 230 V	131.00	141.60
D432	NO FRAME 80 ROUND	Recessed downlight, single, white	1xGU5,3 LED excl. transformer	122.00	131.90
D933	NO FRAME 80 ROUND	Recessed downlight, single, black	1xGU10 LED 230 V	131.00	141.60
D433	NO FRAME 80 ROUND	Recessed downlight, single, black	1xGU5,3 LED excl. transformer	122.00	131.90
D117	NO FRAME 80 ROUND kit 80 round	Recessed frame for D432 and D932, white	-	23.00	24.85
D118	NO FRAME 80 ROUND kit 80 round	Recessed frame for D433 and D933, black	-	23.00	24.85
D451	NO FRAME 150	Recessed downlight, single, white	1xG53 LED excl. transformer	144.00	155.65
D452	NO FRAME 150	Recessed downlight, single, black	1xG53 LED excl. transformer	144.00	155.65
D151	NO FRAME 150 kit 150	Recessed frame for D451, white	-	29.00	31.35
D152	NO FRAME 150 kit 150	Recessed frame for D452, black	-	29.00	31.35
D455	NO FRAME 150 DUO	Recessed downlight, double, white	2xG53 LED excl. transformer	222.00	240.00
D456	NO FRAME 150 DUO	Recessed downlight, double, black	2xG53 LED excl. transformer	222.00	240.00
D155	NO FRAME 150 DUO kit 150 duo	Recessed frame for D455, white	-	33.00	35.65
D156	NO FRAME 150 DUO kit 150 duo	Recessed frame for D456, black	-	33.00	35.65
D471	NO FRAME 150 ROUND	Recessed downlight, single, white	1xG53 LED excl. transformer	153.00	165.40
D472	NO FRAME 150 ROUND	Recessed downlight, single, black	1xG53 LED excl. transformer	153.00	165.40
D171	NO FRAME 150 ROUND kit 150 round	Recessed frame for D471, white	-	24.00	25.95
D172	NO FRAME 150 ROUND kit 150 round	Recessed frame for D472, black	-	24.00	25.95
D158	NO FRAME 150 anti glare cone 150	Anti glare cone for NO FRAME 150 downlights, white	-	27.00	29.20
D159	NO FRAME 150 anti glare cone 150	Anti glare cone for NO FRAME 150 downlights, black	-	27.00	29.20
D424-15	OPUS	LED-recessed downlight with LED module dim to warm, CRI>90, white	1x12,6W LED 15° dim to warm 1910K – 3000K CRI>90 350mA excl. driv	179.00	193.50
D424-25	OPUS	LED-recessed downlight with LED module dim to warm, CRI>90, white	1x12,6W LED 25° dim to warm 1910K – 3000K CRI>90 350mA excl. driv	179.00	193.50
D424-38	OPUS	LED-recessed downlight with LED module dim to warm, CRI>90, white	1x12,6W LED 38° dim to warm 1910K – 3000K CRI>90 350mA excl. driv	179.00	193.50
D424-60	OPUS	LED-recessed downlight with LED module dim to warm, CRI>90, white	1x12,6W LED 60° dim to warm 1910K – 3000K CRI>90 350mA excl. driv	179.00	193.50
D426-11	OPUS	LED-recessed downlight with LED module, CRI>90, white	1x9,3W LED 11° lens 2700K CRI>90 500mA excl. driver	137.00	148.10
D426-15	OPUS	LED-recessed downlight with LED module, CRI>90, white	1x9,3W LED 15° 2700K CRI>90 500mA excl. driver	137.00	148.10
D426-25	OPUS	LED-recessed downlight with LED module, CRI>90, white	1x9,3W LED 25° 2700K CRI>90 500mA excl. driver	137.00	148.10
D426-38	OPUS	LED-recessed downlight with LED module, CRI>90, white	1x9,3W LED 38° 2700K CRI>90 500mA excl. driver	137.00	148.10
D426-60	OPUS	LED-recessed downlight with LED module, CRI>90, white	1x9,3W LED 60° 2700K CRI>90 500mA excl. driver	137.00	148.10
D428-11	OPUS	LED-recessed downlight with LED module, CRI>90, white	1x9,3W LED 11° lens 3000K CRI>90 500mA excl. driver	137.00	148.10
D428-15	OPUS	LED-recessed downlight with LED module, CRI>90, white	1x9,3W LED 15° 3000K CRI>90 500mA excl. driver	137.00	148.10
D428-25	OPUS	LED-recessed downlight with LED module, CRI>90, white	1x9,3W LED 25° 3000K CRI>90 500mA excl. driver	137.00	148.10
D428-38	OPUS	LED-recessed downlight with LED module, CRI>90, white	1x9,3W LED 38° 3000K CRI>90 500mA excl. driver	137.00	148.10
D428-60	OPUS	LED-recessed downlight with LED module, CRI>90, white	1x9,3W LED 60° 3000K CRI>90 500mA excl. driver	137.00	148.10

N° Article	Nom du luminaire	Description	Spécifications	PRIX BRUT H.T	PRIX BRUT T.T.C
D434	OPUS	Recessed downlight, white	1xGU10 LED 230 V	82.00	88.65
D425-15	OPUS	LED-recessed downlight with LED module dim to warm, CRI>90, black	1x12,6W LED 15° dim to warm 1910K – 3000K CRI>90 350mA excl. driv	179.00	193.50
D425-25	OPUS	LED-recessed downlight with LED module dim to warm, CRI>90, black	1x12,6W LED 25° dim to warm 1910K – 3000K CRI>90 350mA excl. driv	179.00	193.50
D425-38	OPUS	LED-recessed downlight with LED module dim to warm, CRI>90, black	1x12,6W LED 38° dim to warm 1910K – 3000K CRI>90 350mA excl. driv	179.00	193.50
D425-60	OPUS	LED-recessed downlight with LED module dim to warm, CRI>90, black	1x12,6W LED 60° dim to warm 1910K – 3000K CRI>90 350mA excl. driv	179.00	193.50
D427-11	OPUS	LED-recessed downlight with LED module, CRI>90, black	1x9,3W LED 11° lens 2700K CRI>90 500mA excl. driver	137.00	148.10
D427-15	OPUS	LED-recessed downlight with LED module, CRI>90, black	1x9,3W LED 15° 2700K CRI>90 500mA excl. driver	137.00	148.10
D427-25	OPUS	LED-recessed downlight with LED module, CRI>90, black	1x9,3W LED 25° 2700K CRI>90 500mA excl. driver	137.00	148.10
D427-38	OPUS	LED-recessed downlight with LED module, CRI>90, black	1x9,3W LED 38° 2700K CRI>90 500mA excl. driver	137.00	148.10
D427-60	OPUS	LED-recessed downlight with LED module, CRI>90, black	1x9,3W LED 60° 2700K CRI>90 500mA excl. driver	137.00	148.10
D429-11	OPUS	LED-recessed downlight with LED module, CRI>90, black	1x9,3W LED 11° lens 3000K CRI>90 500mA excl. driver	137.00	148.10
D429-15	OPUS	LED-recessed downlight with LED module, CRI>90, black	1x9,3W LED 15° 3000K CRI>90 500mA excl. driver	137.00	148.10
D429-25	OPUS	LED-recessed downlight with LED module, CRI>90, black	1x9,3W LED 25° 3000K CRI>90 500mA excl. driver	137.00	148.10
D429-38	OPUS	LED-recessed downlight with LED module, CRI>90, black	1x9,3W LED 38° 3000K CRI>90 500mA excl. driver	137.00	148.10
D429-60	OPUS	LED-recessed downlight with LED module, CRI>90, black	1x9,3W LED 60° 3000K CRI>90 500mA excl. driver	137.00	148.10
D435	OPUS	Recessed downlight, black	1xGU10 LED 230 V	82.00	88.65
D120	OPUS snoot	Snoot for OPUS, white	–	17.00	18.40
D121	OPUS snoot	Snoot for OPUS, black	–	17.00	18.40
D119	OPUS cover cap	Cover cap for OPUS	–	2.00	2.15
D885	OPUS ZOOM	LED-recessed fixture, CRI>90, focusable, white	1x2W LED 15°-60° 2700K CRI>90 500mA excl. driver	353.00	381.60
D888	OPUS ZOOM	LED-recessed fixture, CRI>90, focusable, white	1x2W LED 15°-60° 3000K CRI>90 500mA excl. driver	353.00	381.60
D887	OPUS ZOOM	LED-recessed fixture, CRI>90, focusable, black	1x2W LED 15°-60° 2700K CRI>90 500mA excl. driver	353.00	381.60
D890	OPUS ZOOM	LED-recessed fixture, CRI>90, focusable, black	1x2W LED 15°-60° 3000K CRI>90 500mA excl. driver	353.00	381.60
D443-15	OPUS Q	LED-recessed dimlight with LED module dim to warm, CRI>90, white	1x12,6W LED 15° dim to warm 1910K – 3000K CRI>90 350mA excl. driv	193.00	208.65
D443-25	OPUS Q	LED-recessed downlight with LED module dim to warm, CRI>90, white	1x12,6W LED 25° dim to warm 1910K – 3000K CRI>90 350mA excl. driv	193.00	208.65
D443-38	OPUS Q	LED-recessed downlight with LED module dim to warm, CRI>90, white	1x12,6W LED 38° dim to warm 1910K – 3000K CRI>90 350mA excl. driv	193.00	208.65
D443-60	OPUS Q	LED-recessed downlight with LED module dim to warm, CRI>90, white	1x12,6W LED 60° dim to warm 1910K – 3000K CRI>90 350mA excl. driv	193.00	208.65
D445-11	OPUS Q	LED-recessed downlight with LED module, CRI>90, white	1x9,3W LED 11° lens 2700K CRI>90 500mA excl. driver	151.00	163.25
D445-15	OPUS Q	LED-recessed downlight with LED module, CRI>90, white	1x9,3W LED 15° 2700K CRI>90 500mA excl. driver	151.00	163.25
D445-25	OPUS Q	LED-recessed downlight with LED module, CRI>90, white	1x9,3W LED 25° 2700K CRI>90 500mA excl. driver	151.00	163.25
D445-38	OPUS Q	LED-recessed downlight with LED module, CRI>90, white	1x9,3W LED 38° 2700K CRI>90 500mA excl. driver	151.00	163.25
D445-60	OPUS Q	LED-recessed downlight with LED module, CRI>90, white	1x9,3W LED 60° 2700K CRI>90 500mA excl. driver	151.00	163.25
D447-11	OPUS Q	LED-recessed downlight with LED module, CRI>90, white	1x9,3W LED 11° lens 3000K CRI>90 500mA excl. driver	151.00	163.25
D447-15	OPUS Q	LED-recessed downlight with LED module, CRI>90, white	1x9,3W LED 15° 3000K CRI>90 500mA excl. driver	151.00	163.25
D447-25	OPUS Q	LED-recessed downlight with LED module, CRI>90, white	1x9,3W LED 25° 3000K CRI>90 500mA excl. driver	151.00	163.25
D447-38	OPUS Q	LED-recessed downlight with LED module, CRI>90, white	1x9,3W LED 38° 3000K CRI>90 500mA excl. driver	151.00	163.25
D447-60	OPUS Q	LED-recessed downlight with LED module, CRI>90, white	1x9,3W LED 60° 3000K CRI>90 500mA excl. driver	151.00	163.25
D449	OPUS Q	Recessed downlight, white	1xGU10 LED 230 V	91.00	98.35
D444-15	OPUS Q	LED-recessed downlight with LED module dim to warm, CRI>90, black	1x12,6W LED 15° dim to warm 1910K – 3000K CRI>90 350mA excl. driv	193.00	208.65
D444-25	OPUS Q	LED-recessed downlight with LED module dim to warm, CRI>90, black	1x12,6W LED 25° dim to warm 1910K – 3000K CRI>90 350mA excl. driv	193.00	208.65
D444-38	OPUS Q	LED-recessed downlight with LED module dim to warm, CRI>90, black	1x12,6W LED 38° dim to warm 1910K – 3000K CRI>90 350mA excl. driv	193.00	208.65
D444-60	OPUS Q	LED-recessed downlight with LED module dim to warm, CRI>90, black	1x12,6W LED 60° dim to warm 1910K – 3000K CRI>90 350mA excl. driv	193.00	208.65
D446-11	OPUS Q	LED-recessed downlight with LED module, CRI>90, black	1x9,3W LED 11° lens 2700K CRI>90 500mA excl. driver	151.00	163.25
D446-15	OPUS Q	LED-recessed downlight with LED module, CRI>90, black	1x9,3W LED 15° 2700K CRI>90 500mA excl. driver	151.00	163.25
D446-25	OPUS Q	LED-recessed downlight with LED module, CRI>90, black	1x9,3W LED 25° 2700K CRI>90 500mA excl. driver	151.00	163.25
D446-38	OPUS Q	LED-recessed downlight with LED module, CRI>90, black	1x9,3W LED 38° 2700K CRI>90 500mA excl. driver	151.00	163.25
D446-60	OPUS Q	LED-recessed downlight with LED module, CRI>90, black	1x9,3W LED 60° 2700K CRI>90 500mA excl. driver	151.00	163.25
D448-11	OPUS Q	LED-recessed downlight with LED module, CRI>90, black	1x9,3W LED 11° lens 3000K CRI>90 500mA excl. driver	151.00	163.25
D448-15	OPUS Q	LED-recessed downlight with LED module, CRI>90, black	1x9,3W LED 15° 3000K CRI>90 500mA excl. driver	151.00	163.25
D448-25	OPUS Q	LED-recessed downlight with LED module, CRI>90, black	1x9,3W LED 25° 3000K CRI>90 500mA excl. driver	151.00	163.25
D448-38	OPUS Q	LED-recessed downlight with LED module, CRI>90, black	1x9,3W LED 38° 3000K CRI>90 500mA excl. driver	151.00	163.25
D448-60	OPUS Q	LED-recessed downlight with LED module, CRI>90, black	1x9,3W LED 60° 3000K CRI>90 500mA excl. driver	151.00	163.25
D450	OPUS Q	Recessed downlight, black	1xGU10 LED 230 V	91.00	98.35
D120	OPUS Q snoot	Snoot for OPUS Q, white	–	17.00	18.40
D121	OPUS Q snoot	Snoot for OPUS Q, black	–	17.00	18.40
D741	OPUS Q ZOOM	LED-recessed fixture, CRI>90, focusable, white	1x2W LED 15°-60° 2700K CRI>90 500mA excl. driver	367.00	396.75
D968	OPUS Q ZOOM	LED-recessed fixture, CRI>90, focusable, white	1x2W LED 15°-60° 3000K CRI>90 500mA excl. driver	367.00	396.75

N° Article	Nom du luminaire	Description	Spécifications	PRIX BRUT H.T	PRIX BRUT T.T.C
D743	OPUS Q ZOOM	LED-recessed fixture, CRI>90, focusable, black	1x2W LED 15°-60° 2700K CRI>90 500mA excl. driver	367.00	396.75
D969	OPUS Q ZOOM	LED-recessed fixture, CRI>90, focusable, black	1x2W LED 15°-60° 3000K CRI>90 500mA excl. driver	367.00	396.75
D707	ORBIT 1	LED-wall luminaire, CRI>90, white	4W LED 2700K CRI>90 incl. driver	271.00	292.95
D508	ORBIT 1	LED-wall luminaire, CRI>90, black	4W LED 2700K CRI>90 incl. driver	271.00	292.95
D708	ORBIT 2	LED-wall luminaire, CRI>90, white	7,5W LED 2700K CRI>90 incl. driver	459.00	496.20
D510	ORBIT 2	LED-wall luminaire, CRI>90, black	7,5W LED 2700K CRI>90 incl. driver	459.00	496.20
D709	ORBIT 3	LED-wall luminaire, CRI>90, white	7,5W LED 2700K CRI>90 incl. driver	444.00	479.95
D512	ORBIT 3	LED-wall luminaire, CRI>90, black	7,5W LED 2700K CRI>90 incl. driver	444.00	479.95
D710	ORBIT 4	LED-wall luminaire, CRI>90, white	7,5W LED 2700K CRI>90 incl. driver	451.00	487.55
D514	ORBIT 4	LED-wall luminaire, CRI>90, black	7,5W LED 2700K CRI>90 incl. driver	451.00	487.55
D631	PHOENIX	LED-recessed downlight, CRI>90, IP44, white/opal white	1x13W LED 125° 2700K CRI>90 350mA excl. driver	179.00	193.50
D226	PHOENIX ON	LED-wall and ceiling luminaire, CRI>90, IP54, white/opal white	1x13W LED 125° 2700K CRI>90 incl. driver phase dim	300.00	324.30
D223	PHOENIX ON	LED-wall and ceiling luminaire, CRI>90, IP54, white/opal white	1x13W LED 125° 3000K CRI>90 incl. driver phase dim	300.00	324.30
D227	PHOENIX ON	LED-wall and ceiling luminaire, CRI>90, IP54, black/opal white	1x13W LED 125° 2700K CRI>90 incl. driver phase dim	300.00	324.30
D225	PHOENIX ON	LED-wall and ceiling luminaire, CRI>90, IP54, black/opal white	1x13W LED 125° 3000K CRI>90 incl. driver phase dim	300.00	324.30
D252	PIPER S	LED-ceiling luminaire, CRI>90, white	1x7W LED 3000K CRI>90 incl. driver	271.00	292.95
D752	PIPER S dim	LED-ceiling luminaire, CRI>90, dimmable, white	1x7W LED 3000K CRI>90 incl. driver phase dim	306.00	330.80
D253	PIPER	LED-ceiling luminaire, CRI>90, white	1x15W LED 3000K CRI>90 incl. driver	397.00	429.15
D753	PIPER dim	LED-ceiling luminaire, CRI>90, dimmable, white	1x15W LED 3000K CRI>90 incl. driver phase dim	433.00	468.05
D768	PIPER	LED-ceiling luminaire, CRI>90, black	1x15W LED 3000K CRI>90 incl. driver	397.00	429.15
D795	PIPER dim	LED-ceiling luminaire, CRI>90, dimmable, black	1x15W LED 3000K CRI>90 incl. driver phase dim	433.00	468.05
D718	PISA	LED-stem luminaire, CRI>90, IP65, black	1x2,1W LED 3000K CRI>90 24 Vdc excl. Driver	326.00	352.40
CV-24-18-IP67	DRIVER 24 Vdc - IP67	DRIVER 24 Vdc, 1-18 W, 100-240 V, 162x37x25 mm, IP67	-	66.00	71.35
D161	MICRO JUNCTION BOX IP68 - II	Micro junction box IP68, for max. 1 luminaire	-	31.00	33.50
D162	MICRO JUNCTION BOX IP68 - IV	Micro junction box IP68, for max. 3 luminaires	-	73.00	78.90
D229	PIXEL	LED-wall recessed luminaire, CRI>90, IP44, white	1x1W LED 3000K CRI>90 350mA excl. driver	142.00	153.50
D279	PIXEL	LED-wall recessed luminaire, CRI>90, IP44, alu	1x1W LED 3000K CRI>90 350mA excl. driver	142.00	153.50
9000-0141	PIXEL mounting box 41	Mounting box for PIXEL	-	48.00	51.90
9000-0241	PIXEL mounting sleeve 41	Concrete mounting sleeve for PIXEL	-	27.00	29.20
D209	POINT 55	LED-inground luminaire, CRI>90, IP67, stainless steel	1x3,4W LED 30° 3000K CRI>90 incl. driver	339.00	366.45
D632	REED	Spotlight with 3-phase universal adapter, white / anti glare ring black	1xGU10 LED 230 V	179.00	193.50
D633	REED	Spotlight with 3-phase universal adapter, white / anti glare ring gold	1xGU10 LED 230 V	179.00	193.50
D622	REED	Spotlight with 3-phase universal adapter, black / anti glare ring black	1xGU10 LED 230 V	179.00	193.50
D623	REED	Spotlight with 3-phase universal adapter, black / anti glare ring gold	1xGU10 LED 230 V	179.00	193.50
D634	REED	Spotlight with 3-phase universal adapter, brass / anti glare ring black	1xGU10 LED 230 V	197.00	212.95
D652	REED AB	Spotlight with canopy, white / anti glare ring black	1xGU10 LED 230 V	179.00	193.50
D653	REED AB	Spotlight with canopy, white / anti glare ring gold	1xGU10 LED 230 V	179.00	193.50
D642	REED AB	Spotlight with canopy, black / anti glare ring black	1xGU10 LED 230 V	179.00	193.50
D643	REED AB	Spotlight with canopy, black / anti glare ring gold	1xGU10 LED 230 V	179.00	193.50
D654	REED AB	Spotlight with canopy, brass / anti glare ring black	1xGU10 LED 230 V	197.00	212.95
D110	REED AB mounting plate	Mounting plate for REED AB, white	-	15.00	16.20
D109	REED AB mounting plate	Mounting plate for REED AB, black	-	15.00	16.20
D567	REED P1	Spotlight with Global 1-phase adapter, white / anti glare ring black	1xGU10 LED 230 V	179.00	193.50
D568	REED P1	Spotlight with Global 1-phase adapter, white / anti glare ring gold	1xGU10 LED 230 V	179.00	193.50
D563	REED P1	Spotlight with Global 1-phase adapter, black / anti glare ring black	1xGU10 LED 230 V	179.00	193.50
D564	REED P1	Spotlight with Global 1-phase adapter, black / anti glare ring gold	1xGU10 LED 230 V	179.00	193.50
D573	REED P1	Spotlight with Global 1-phase adapter, brass / anti glare ring black	1xGU10 LED 230 V	197.00	212.95
D511-15	REED S	LED-spotlight with 3-phase universal adapter, CRI>95, dim to warm, white	1x10W LED 15° dim to warm 1800K - 3000K CRI>95 incl. driver phase d	284.00	307.00
D511-30	REED S	LED-spotlight with 3-phase universal adapter, CRI>95, dim to warm, white	1x10W LED 30° dim to warm 1800K - 3000K CRI>95 incl. driver phase d	284.00	307.00
D511-50	REED S	LED-spotlight with 3-phase universal adapter, CRI>95, dim to warm, white	1x10W LED 50° dim to warm 1800K - 3000K CRI>95 incl. driver phase d	284.00	307.00
D513-15	REED S	LED-spotlight with 3-phase universal adapter, CRI>95, dim to warm, black	1x10W LED 15° dim to warm 1800K - 3000K CRI>95 incl. driver phase d	284.00	307.00
D513-30	REED S	LED-spotlight with 3-phase universal adapter, CRI>95, dim to warm, black	1x10W LED 30° dim to warm 1800K - 3000K CRI>95 incl. driver phase d	284.00	307.00
D513-50	REED S	LED-spotlight with 3-phase universal adapter, CRI>95, dim to warm, black	1x10W LED 50° dim to warm 1800K - 3000K CRI>95 incl. driver phase d	284.00	307.00
D744-15	REED S	LED-spotlight with 3-phase universal adapter, CRI>95, dim to warm, brass	1x10W LED 15° dim to warm 1800K - 3000K CRI>95 incl. driver phase d	302.00	326.45
D744-30	REED S	LED-spotlight with 3-phase universal adapter, CRI>95, dim to warm, brass	1x10W LED 30° dim to warm 1800K - 3000K CRI>95 incl. driver phase d	302.00	326.45
D744-50	REED S	LED-spotlight with 3-phase universal adapter, CRI>95, dim to warm, brass	1x10W LED 50° dim to warm 1800K - 3000K CRI>95 incl. driver phase d	302.00	326.45
D771-15	REED S P1	LED-spotlight with Global 1-phase adapter, CRI>95, dim to warm, white	1x10W LED 15° dim to warm 1800K - 3000K CRI>95 incl. driver phase d	284.00	307.00

N° Article	Nom du luminaire	Description	Spécifications	PRIX BRUT H.T	PRIX BRUT T.T.C
D669-25	RIGA Q	LED-recessed downlight with LED module dim to warm, CRI>90, black	1x12,6W LED 25° dim to warm 1910K – 3000K CRI>90 350mA excl. driv	153.00	165.40
D669-38	RIGA Q	LED-recessed downlight with LED module dim to warm, CRI>90, black	1x12,6W LED 38° dim to warm 1910K – 3000K CRI>90 350mA excl. driv	153.00	165.40
D669-60	RIGA Q	LED-recessed downlight with LED module dim to warm, CRI>90, black	1x12,6W LED 60° dim to warm 1910K – 3000K CRI>90 350mA excl. driv	153.00	165.40
D695-11	RIGA Q	LED-recessed downlight with LED module, CRI>90, black	1x9,3W LED 11° lens 2700K CRI>90 500mA excl. driver	110.00	118.90
D695-15	RIGA Q	LED-recessed downlight with LED module, CRI>90, black	1x9,3W LED 15° 2700K CRI>90 500mA excl. driver	110.00	118.90
D695-25	RIGA Q	LED-recessed downlight with LED module, CRI>90, black	1x9,3W LED 25° 2700K CRI>90 500mA excl. driver	110.00	118.90
D695-38	RIGA Q	LED-recessed downlight with LED module, CRI>90, black	1x9,3W LED 38° 2700K CRI>90 500mA excl. driver	110.00	118.90
D695-60	RIGA Q	LED-recessed downlight with LED module, CRI>90, black	1x9,3W LED 60° 2700K CRI>90 500mA excl. driver	110.00	118.90
D697-11	RIGA Q	LED-recessed downlight with LED module, CRI>90, black	1x9,3W LED 11° lens 3000K CRI>90 500mA excl. driver	110.00	118.90
D697-15	RIGA Q	LED-recessed downlight with LED module, CRI>90, black	1x9,3W LED 15° 3000K CRI>90 500mA excl. driver	110.00	118.90
D697-25	RIGA Q	LED-recessed downlight with LED module, CRI>90, black	1x9,3W LED 25° 3000K CRI>90 500mA excl. driver	110.00	118.90
D697-38	RIGA Q	LED-recessed downlight with LED module, CRI>90, black	1x9,3W LED 38° 3000K CRI>90 500mA excl. driver	110.00	118.90
D697-60	RIGA Q	LED-recessed downlight with LED module, CRI>90, black	1x9,3W LED 60° 3000K CRI>90 500mA excl. driver	110.00	118.90
D699	RIGA Q	Recessed downlight, black	1xGU10 LED 230 V	55.00	59.45
D120	RIGA Q snoot	Snoot for RIGA Q, white	–	17.00	18.40
D121	RIGA Q snoot	Snoot for RIGA Q, black	–	17.00	18.40
D917	RIGA Q ZOOM	LED-recessed fixture, CRI>90, focusable, white	1x2W LED 15°-60° 2700K CRI>90 500mA excl. driver	328.00	354.55
D971	RIGA Q ZOOM	LED-recessed fixture, CRI>90, focusable, white	1x2W LED 15°-60° 3000K CRI>90 500mA excl. driver	328.00	354.55
D918	RIGA Q ZOOM	LED-recessed fixture, CRI>90, focusable, black	1x2W LED 15°-60° 2700K CRI>90 500mA excl. driver	328.00	354.55
D972	RIGA Q ZOOM	LED-recessed fixture, CRI>90, focusable, black	1x2W LED 15°-60° 3000K CRI>90 500mA excl. driver	328.00	354.55
D829	RINGO	LED-ceiling luminaire, CRI>90, dimmable, IP54, white	14W LED 3000K CRI>90 incl. driver phase dim	320.00	345.90
D809	RINGO	LED-ceiling luminaire, CRI>90, dimmable, IP54, black	14W LED 3000K CRI>90 incl. driver phase dim	320.00	345.90
D244	RIO	LED-wall luminaire, IP54, alu	2x1W LED 3000K incl. driver	291.00	314.55
D600	RONA	LED-fixture with USB charger and smartphone storage, silvergrey	1x3W LED 40° 3000K incl. driver / USB: 5 V – 1 A	462.00	499.40
D309	ROY	Wall luminaire, white	1xG9 LED or 1x48W halogen 230 V	131.00	141.60
D308	ROY	Wall luminaire, grey	1xG9 LED or 1x48W halogen 230 V	131.00	141.60
D249	ROYAL	LED-recessed downlight, opal white	6x2,4W LED 3000K 500mA excl. driver	193.00	208.65
D205	SATIS	LED-wall luminaire, CRI>90, dimmable, white	1x6W LED 3000K CRI>90 incl. driver phase dim	277.00	299.45
D926	SATURNO 1	LED-spotlight, CRI>90, dimmable, white / anti glare ring black	1x9,3W LED 32° 2700K CRI>90 incl. driver phase dim	295.00	318.90
D927	SATURNO 1	LED-spotlight, CRI>90, dimmable, white / anti glare ring gold	1x9,3W LED 32° 2700K CRI>90 incl. driver phase dim	295.00	318.90
D924	SATURNO 1	LED-spotlight, CRI>90, dimmable, black / anti glare ring black	1x9,3W LED 32° 2700K CRI>90 incl. driver phase dim	295.00	318.90
D925	SATURNO 1	LED-spotlight, CRI>90, dimmable, black / anti glare ring gold	1x9,3W LED 32° 2700K CRI>90 incl. driver phase dim	295.00	318.90
D936	SATURNO 2	LED-spotlight, CRI>90, dimmable, white / anti glare ring black	2x9,3W LED 32° 2700K CRI>90 incl. driver phase dim	448.00	484.30
D937	SATURNO 2	LED-spotlight, CRI>90, dimmable, white / anti glare ring gold	2x9,3W LED 32° 2700K CRI>90 incl. driver phase dim	448.00	484.30
D934	SATURNO 2	LED-spotlight, CRI>90, dimmable, black / anti glare ring black	2x9,3W LED 32° 2700K CRI>90 incl. driver phase dim	448.00	484.30
D935	SATURNO 2	LED-spotlight, CRI>90, dimmable, black / anti glare ring gold	2x9,3W LED 32° 2700K CRI>90 incl. driver phase dim	448.00	484.30
D559	SATURNO IN	LED-recessed luminaire, CRI>90, white / anti glare ring black	1x9,3W LED 32° 2700K CRI>90 500mA excl. driver	154.00	166.45
D560	SATURNO IN	LED-recessed luminaire, CRI>90, white / anti glare ring gold	1x9,3W LED 32° 2700K CRI>90 500mA excl. driver	154.00	166.45
D557	SATURNO IN	LED-recessed luminaire, CRI>90, black / anti glare ring black	1x9,3W LED 32° 2700K CRI>90 500mA excl. driver	154.00	166.45
D558	SATURNO IN	LED-recessed luminaire, CRI>90, black / anti glare ring gold	1x9,3W LED 32° 2700K CRI>90 500mA excl. driver	154.00	166.45
13114-04	SATURNO honey comb louver	Honey comb louver for all SATURNO versions, black	–	33.00	35.65
DH-D877	SATURNO lens	Lens 18° for all SATURNO versions	–	12.00	12.95
DH-D994	SATURNO reflector	Reflector 15° for all SATURNO versions	–	12.00	12.95
DH-D996	SATURNO reflector	Reflector 48° for all SATURNO versions	–	12.00	12.95
D202	SAXO	LED-wall recessed luminaire, CRI>90, including mounting box, IP54, white	1x2W LED 3000K CRI>90 incl. driver	160.00	172.95
D702	SAXO	LED-wall recessed luminaire, CRI>90, including mounting box, IP54, grey	1x2W LED 3000K CRI>90 incl. driver	160.00	172.95
D203	SAXO ON	LED-wall luminaire, IP54, white	1x2W LED 3000K incl. driver	226.00	244.30
D821	SCOTTY 3	LED-inground luminaire, CRI>90, IP67, stainless steel	1x3W LED 25° 3000K CRI>90 incl. driver	440.00	475.65
D820	SCOTTY 6	LED-inground luminaire, CRI>90, IP67, stainless steel	1x8W LED 20° 3000K CRI>90 incl. driver	670.00	724.25
D836	SCOTTY 9	LED-inground luminaire, CRI>90, IP67, stainless steel	1x9W LED 30° 3000K CRI>90 incl. driver phase dim	720.00	778.30
D161	MICRO JUNCTION BOX IP68 - II	Micro junction box IP68, for max. 1 luminaire	–	31.00	33.50
D162	MICRO JUNCTION BOX IP68 - IV	Micro junction box IP68, for max. 3 luminaires	–	73.00	78.90
D247	SECRET	LED-wall luminaire, CRI>90, dimmable, IP54, white	2x3W LED 3000K CRI>90 incl. driver phase dim	350.00	378.35
D939	SECRET	LED-wall luminaire, CRI>90, dimmable, IP54, black	2x3W LED 3000K CRI>90 incl. driver phase dim	350.00	378.35
D246	SECRET	LED-wall luminaire, CRI>90, dimmable, IP54, grey	2x3W LED 3000K CRI>90 incl. driver phase dim	350.00	378.35
D239	SECRET	LED-wall luminaire, CRI>90, dimmable, IP54, alu	2x3W LED 3000K CRI>90 incl. driver phase dim	382.00	412.95
D201	SECRET DOWN	LED-wall luminaire, CRI>90, IP54, white	1x3W LED 3000K CRI>90 incl. driver	266.00	287.55

N° Article	Nom du luminaire	Description	Spécifications	PRIX BRUT H.T	PRIX BRUT T.T.C
D262	SECRET DOWN	LED-wall luminaire, CRI>90, IP54, black	1x3W LED 3000K CRI>90 incl. driver	266.00	287.55
D200	SECRET DOWN	LED-wall luminaire, CRI>90, IP54, grey	1x3W LED 3000K CRI>90 incl. driver	266.00	287.55
D949	SECRET UP	LED-wall luminaire, CRI>90, IP54, white	1x3W LED 3000K CRI>90 incl. driver	271.00	292.95
D938	SECRET UP	LED-wall luminaire, CRI>90, IP54, black	1x3W LED 3000K CRI>90 incl. driver	271.00	292.95
D946	SECRET UP	LED-wall luminaire, CRI>90, IP54, grey	1x3W LED 3000K CRI>90 incl. driver	271.00	292.95
D620	SILENCE	LED-wall luminaire, IP54, black	3W LED 3000K incl. driver	259.00	280.00
D221	SILENCE	LED-wall luminaire, IP54, grey	3W LED 3000K incl. driver	259.00	280.00
492-09-00-03	SMILE	LED-wall recessed luminaire, CRI>90, white	1x2W LED 3000K CRI>90 500mA excl. driver	181.00	195.65
492-09-00-05	SMILE	LED-wall recessed luminaire, CRI>90, black	1x2W LED 3000K CRI>90 500mA excl. driver	181.00	195.65
492-09-00-01	SMILE	LED-wall recessed luminaire, CRI>90, chrome	1x2W LED 3000K CRI>90 500mA excl. driver	153.00	165.40
492-09-00-33	SMILE	LED-wall recessed luminaire, CRI>90, platinum	1x2W LED 3000K CRI>90 500mA excl. driver	153.00	165.40
494-09-00-41	SMILE IP65	LED-wall recessed luminaire, CRI>90, IP65, black anodized	1x2W LED 3000K CRI>90 500mA excl. driver	233.00	251.85
494-09-00-40	SMILE IP65	LED-wall recessed luminaire, CRI>90, IP65, nature anodized	1x2W LED 3000K CRI>90 500mA excl. driver	233.00	251.85
892-09-00-03	SMILE Q	LED-wall recessed luminaire, CRI>90, white	1x2W LED 3000K CRI>90 500mA excl. driver	240.00	259.45
892-09-00-05	SMILE Q	LED-wall recessed luminaire, CRI>90, black	1x2W LED 3000K CRI>90 500mA excl. driver	240.00	259.45
892-09-00-33	SMILE Q	LED-wall recessed luminaire, CRI>90, platinum	1x2W LED 3000K CRI>90 500mA excl. driver	200.00	216.20
9000-0136	SMILE mounting box 36	Mounting box for SMILE and SMILE Q	-	48.00	51.90
9000-0336	SMILE mounting ring 36	Mounting ring (2-parts) for junction boxes Ø 68 mm for SMILE and SMILE Q, white (delivery without junction box)	-	43.00	46.50
9000-0236	SMILE mounting sleeve 36	Concrete mounting sleeve for SMILE and SMILE Q	-	27.00	29.20
D538	SOHO	Table luminaire, black	1xE27 LED 230 V	177.00	191.35
D539	SOHO	Table luminaire, brass	1xE27 LED 230 V	188.00	203.25
D515	SOHO CL	Ceiling luminaire, black	1xE27 LED 230 V	177.00	191.35
D516	SOHO CL	Ceiling luminaire, brass	1xE27 LED 230 V	188.00	203.25
D703	SOHO P3	Luminaire with 3-phase universal adapter, black	1xE27 LED 230 V	242.00	261.60
D712	SOHO P3	Luminaire with 3-phase universal adapter, brass	1xE27 LED 230 V	253.00	273.50
D870	SOLO	Recessed downlight, white	1xGU10 LED 230 V	51.00	55.15
D895	SOLO IP	Recessed downlight, IP44, white	1xGU10 LED 230 V	62.00	67.00
D323	SONO	Recessed downlight, white	1xGU10 LED 230 V	70.00	75.65
D423	SONO	Recessed downlight, white	1xGU5,3 LED excl. transformer	70.00	75.65
756-11-20-03EP	SPAGO 60 EP	LED-pendant, CRI>90, white	1x2W LED 40° 2700K CRI>90 700 mA excl. driver	353.00	381.60
756-11-20-05EP	SPAGO 60 EP	LED-pendant, CRI>90, black	1x2W LED 40° 2700K CRI>90 700 mA excl. driver	353.00	381.60
759-11-20-03EP	SPAGO 90 EP	LED-pendant, CRI>90, white	1x2W LED 40° 2700K CRI>90 700 mA excl. driver	373.00	403.20
759-11-20-05EP	SPAGO 90 EP	LED-pendant, CRI>90, black	1x2W LED 40° 2700K CRI>90 700 mA excl. driver	373.00	403.20
756-11-20-03T	SPAGO 60 T	LED-pendant, CRI>90, white	1x2W LED 40° 2700K CRI>90 incl. driver	426.00	460.50
756-11-20-05T	SPAGO 60 T	LED-pendant, CRI>90, black	1x2W LED 40° 2700K CRI>90 incl. driver	426.00	460.50
759-11-20-03T	SPAGO 90 T	LED-pendant, CRI>90, white	1x2W LED 40° 2700K CRI>90 incl. driver	442.00	477.80
759-11-20-05T	SPAGO 90 T	LED-pendant, CRI>90, black	1x2W LED 40° 2700K CRI>90 incl. driver	442.00	477.80
9000-9000	SPAGO diffuser	Diffuser accessory for SPAGO, glass bead blasted, L: 50 mm, Ø 14 mm	-	40.00	43.25
D-LP5	LP 5	Rectangular housing, 1200x120x45 mm, for max 5 SPAGO T, white	230 V phase dim	542.00	585.90
D-LP5-BL	LP 5	Rectangular housing, 1200x120x45 mm, for max 5 SPAGO T, black	230 V phase dim	542.00	585.90
D-LP7	LP 7	Round housing, ø 470x45 mm, for max 7 SPAGO T, white	230 V phase dim	631.00	682.10
D-LP7-BL	LP 7	Round housing, ø 470x45 mm, for max 7 SPAGO T, black	230 V phase dim	631.00	682.10
D-LP8	LP 8	Rectangular housing, 900x300x45 mm, for max 8 SPAGO T, white	230 V phase dim	773.00	835.60
D-LP8-BL	LP 8	Rectangular housing, 900x300x45 mm, for max 8 SPAGO T, black	230 V phase dim	773.00	835.60
D-STAR	STAR	Round housing, ø 140x35 mm, for max 6 SPAGO T, white	230 V phase dim	302.00	326.45
D-STAR-BL	STAR	Round housing, ø 140x35 mm, for max 6 SPAGO T, black	230 V phase dim	302.00	326.45
D136	CABLE HOLDER	Cable holder for ø 2-6mm wires, for decentralised mounting, white	-	48.00	51.90
D137	CABLE HOLDER	Cable holder for ø 2-6mm wires, for decentralised mounting, black	-	48.00	51.90
D108	CABLE KIT 5 SPAGO	Special length KIT 5.000 mm for SPAGO T	-	88.00	95.15
D297	SPLIT	LED-wall recessed luminaire, CRI>90, including mounting box, inner part white / colour white	1x2W LED 3000K CRI>90 incl. driver	244.00	263.75
D298	SPLIT	LED-wall recessed luminaire, CRI>90, including mounting box, inner part dull gold / colour white	1x2W LED 3000K CRI>90 incl. driver	244.00	263.75
D382	SQUARE	Recessed downlight, single, white	1xGU10 LED 230 V	49.00	52.95
D480	SQUARE	Recessed downlight, single, white	1xGU5,3 LED excl. transformer	49.00	52.95
D381	SQUARE	Recessed downlight, single, grey	1xGU10 LED 230 V	49.00	52.95
D481	SQUARE	Recessed downlight, single, grey	1xGU5,3 LED excl. transformer	49.00	52.95
D384	SQUARE DUO	Recessed downlight, double, white	2xGU10 LED 230 V	82.00	88.65
D482	SQUARE DUO	Recessed downlight, double, white	2xGU5,3 LED excl. transformer	82.00	88.65

N° Article	Nom du luminaire	Description	Spécifications	PRIX BRUT H.T	PRIX BRUT T.T.C
D383	SQUARE DUO	Recessed downlight, double, grey	2xGU10 LED 230 V	82.00	88.65
D483	SQUARE DUO	Recessed downlight, double, grey	2xGU5,3 LED excl. transformer	82.00	88.65
D952	STANDING CAPRI	LED luminaire, CRI>90, white	1x4W LED 40° 2700K CRI>90 230 V	302.00	326.45
D953	STANDING CAPRI	LED luminaire, CRI>90, black	1x4W LED 40° 2700K CRI>90 230 V	302.00	326.45
D814	STANLEY 1	LED-bollard luminaire, CRI>90, one-sided light emission, IP54, grey	1x7W LED 3000K CRI>90 incl. driver	611.00	660.50
D813	STANLEY 2	LED-bollard luminaire, CRI>90, two-sided light emission, IP54, grey	1x7W LED 3000K CRI>90 incl. driver	564.00	609.70
D754	STICK 500	LED-outdoor-fixture with ground spike, CRI>90, length 500 mm, IP65, black	1x7W LED 25° 3000K CRI>90 incl. driver	342.00	369.70
D755	STICK 700	LED-outdoor-fixture with ground spike, CRI>90, length 700 mm, IP65, black	1x7W LED 25° 3000K CRI>90 incl. driver	360.00	389.15
D208	STRATO 190	LED-recessed downlight, CRI>90, IP44, white	16W LED 3000K CRI>90 incl. driver	282.00	304.85
D210	STRATO 230	LED-recessed downlight, CRI>90, IP44, white	21W LED 3000K CRI>90 incl. driver	375.00	405.40
D344	STYLE DUO	Wall and ceiling luminaire, double, alu	2xGU10 LED 230 V	277.00	299.45
D333	STYLE Q	Wall and ceiling luminaire, single, white	1xGU10 LED 230 V	179.00	193.50
D332	STYLE Q	Wall and ceiling luminaire, single, alu	1xGU10 LED 230 V	179.00	193.50
D335	STYLE Q DUO	Wall and ceiling luminaire, double, white	2xGU10 LED 230 V	288.00	311.35
D334	STYLE Q DUO	Wall and ceiling luminaire, double, alu	2xGU10 LED 230 V	288.00	311.35
D134	STYLE mounting plate	Mounting plate for STYLE-, STYLE Q-luminaires, white	-	10.00	10.80
D133	STYLE mounting plate	Mounting plate for STYLE-, STYLE Q-luminaires, alu	-	10.00	10.80
D819	SUN	LED-wall and ceiling luminaire, white	18W LED 3000K 230 V	470.00	508.05
D673	SUPREME 60	LED-wall and ceiling luminaire, IP44, polished stainless steel	10W LED 3000K incl. driver	368.00	397.80
D678	SUPREME 100	LED-wall and ceiling luminaire, IP44, polished stainless steel	14W LED 3000K incl. driver	448.00	484.30
D680	SUPREME 130	LED-wall and ceiling luminaire, IP44, polished stainless steel	18W LED 3000K incl. driver	539.00	582.65
D421-09	TAIFUN	LED-wall and ceiling recessed luminaire, CRI>90, alu	1x2W LED 3000K CRI>90 500mA excl. driver	168.00	181.60
D421-04	TAIFUN	LED-wall and ceiling recessed luminaire, alu	1x2W LED blue 500mA excl. driver	168.00	181.60
D421-07	TAIFUN	LED-wall and ceiling recessed luminaire, alu	1x2W LED red 500mA excl. driver	168.00	181.60
D421-15	TAIFUN	LED-wall and ceiling recessed luminaire, alu	1x2W LED green 500mA excl. driver	168.00	181.60
D421-16	TAIFUN	LED-wall and ceiling recessed luminaire, alu	1x2W LED amber 500mA excl. driver	168.00	181.60
D421	TAIFUN	Wall and ceiling recessed luminaire, alu	1xG4 LED or 1x20W halogen excl. transformer	84.00	90.80
D964	TOSCA	LED-battery table luminaire, light colour 2700K or 3000K adjustable, including USB charging base, touch dim.	2,2W LED 2700K/3000K touch dim	253.00	273.50
D965	TOSCA	LED-battery table luminaire, light colour 2700K or 3000K adjustable, including USB charging base, touch dim.	2,2W LED 2700K/3000K touch dim	253.00	273.50
D401	TRACK LINE 60	LED-luminaire with 3-phase adapter, CRI>90, dimmable, black	22W LED 3000K CRI>90 incl. driver phase dim	360.00	389.15
D400	TRACK LINE 60 MP	LED-luminaire with 3-phase adapter, CRI>90, dimmable, with micropismatic cover, black	22W LED 3000K CRI>90 incl. driver phase dim	446.00	482.15
D841	TUBO	LED-wall luminaire, CRI>90, dimmable, IP54, white	2x4W LED 3000K CRI>90 230 V phase dim	320.00	345.90
D835	TUBO	LED-wall luminaire, CRI>90, dimmable, IP54, black	2x4W LED 3000K CRI>90 230 V phase dim	320.00	345.90
D781	TWO LIGHT	LED-recessed downlight, CRI>90, with indirect lighting amber, white	1x9,3W LED 32° 3000K CRI>90 + 1x1,2W LED amber / 500mA excl. driver	188.00	203.25
D782	TWO LIGHT	LED-recessed downlight, CRI>90, with indirect lighting 3000K, white	1x9,3W LED 32° 3000K CRI>90 + 1x1,2W LED 3000K CRI>90 / 500mA	188.00	203.25
D751	VARO	LED-recessed downlight, white	1x34W LED 30° 3000K 900mA excl. driver	360.00	389.15
760-11-29-61-05	VEGA T FLEX camel	LED-luminaire, CRI>90, leather cover camel, black	1x2W LED 60° 2700K CRI>90 incl. driver	513.00	554.55
760-09-29-61-05	VEGA T FLEX camel	LED-luminaire, CRI>90, leather cover camel, black	1x2W LED 60° 3000K CRI>90 incl. driver	513.00	554.55
760-11-29-61-01	VEGA T FLEX camel	LED-luminaire, CRI>90, leather cover camel, chrome	1x2W LED 60° 2700K CRI>90 incl. driver	450.00	486.45
760-09-29-61-01	VEGA T FLEX camel	LED-luminaire, CRI>90, leather cover camel, chrome	1x2W LED 60° 3000K CRI>90 incl. driver	450.00	486.45
760-11-29-61-33	VEGA T FLEX camel	LED-luminaire, CRI>90, leather cover camel, platinum	1x2W LED 60° 2700K CRI>90 incl. driver	450.00	486.45
760-09-29-61-33	VEGA T FLEX camel	LED-luminaire, CRI>90, leather cover camel, platinum	1x2W LED 60° 3000K CRI>90 incl. driver	450.00	486.45
760-11-29-60-05	VEGA T FLEX espresso	LED-luminaire, CRI>90, leather cover espresso, black	1x2W LED 60° 2700K CRI>90 incl. driver	513.00	554.55
760-09-29-60-05	VEGA T FLEX espresso	LED-luminaire, CRI>90, leather cover espresso, black	1x2W LED 60° 3000K CRI>90 incl. driver	513.00	554.55
760-11-29-60-01	VEGA T FLEX espresso	LED-luminaire, CRI>90, leather cover espresso, chrome	1x2W LED 60° 2700K CRI>90 incl. driver	450.00	486.45
760-09-29-60-01	VEGA T FLEX espresso	LED-luminaire, CRI>90, leather cover espresso, chrome	1x2W LED 60° 3000K CRI>90 incl. driver	450.00	486.45
760-11-29-60-33	VEGA T FLEX espresso	LED-luminaire, CRI>90, leather cover espresso, platinum	1x2W LED 60° 2700K CRI>90 incl. driver	450.00	486.45
760-09-29-60-33	VEGA T FLEX espresso	LED-luminaire, CRI>90, leather cover espresso, platinum	1x2W LED 60° 3000K CRI>90 incl. driver	450.00	486.45
761-11-29-61-05	VEGA TQ FLEX camel	LED-luminaire, CRI>90, leather cover camel, black	1x2W LED 60° 2700K CRI>90 incl. driver	597.00	645.35
761-09-29-61-05	VEGA TQ FLEX camel	LED-luminaire, CRI>90, leather cover camel, black	1x2W LED 60° 3000K CRI>90 incl. driver	597.00	645.35
761-11-29-61-01	VEGA TQ FLEX camel	LED-luminaire, CRI>90, leather cover camel, chrome	1x2W LED 60° 2700K CRI>90 incl. driver	535.00	578.35
761-09-29-61-01	VEGA TQ FLEX camel	LED-luminaire, CRI>90, leather cover camel, chrome	1x2W LED 60° 3000K CRI>90 incl. driver	535.00	578.35
761-11-29-61-33	VEGA TQ FLEX camel	LED-luminaire, CRI>90, leather cover camel, platinum	1x2W LED 60° 2700K CRI>90 incl. driver	535.00	578.35
761-09-29-61-33	VEGA TQ FLEX camel	LED-luminaire, CRI>90, leather cover camel, platinum	1x2W LED 60° 3000K CRI>90 incl. driver	535.00	578.35
761-11-29-60-05	VEGA TQ FLEX espresso	LED-luminaire, CRI>90, leather cover espresso, black	1x2W LED 60° 2700K CRI>90 incl. driver	597.00	645.35
761-09-29-60-05	VEGA TQ FLEX espresso	LED-luminaire, CRI>90, leather cover espresso, black	1x2W LED 60° 3000K CRI>90 incl. driver	597.00	645.35
761-11-29-60-01	VEGA TQ FLEX espresso	LED-luminaire, CRI>90, leather cover espresso, chrome	1x2W LED 60° 2700K CRI>90 incl. driver	535.00	578.35

N° Article	Nom du luminaire	Description	Spécifications	PRIX BRUT H.T	PRIX BRUT T.T.C
761-09-29-60-01	VEGA TQ FLEX espresso	LED-luminaire, CRI>90, leather cover espresso, chrome	1x2W LED 60° 3000K CRI>90 incl. driver	535.00	578.35
761-11-29-60-33	VEGA TQ FLEX espresso	LED-luminaire, CRI>90, leather cover espresso, platinum	1x2W LED 60° 2700K CRI>90 incl. driver	535.00	578.35
761-09-29-60-33	VEGA TQ FLEX espresso	LED-luminaire, CRI>90, leather cover espresso, platinum	1x2W LED 60° 3000K CRI>90 incl. driver	535.00	578.35
D299	VERONA	LED-wall luminaire, white	2x3W LED 3000K incl. driver	268.00	289.70
D913	VIGO	LED-wall luminaire, IP54, white	4W LED 3000K incl. driver	244.00	263.75
D914	VIGO	LED-wall luminaire, IP54, black	4W LED 3000K incl. driver	244.00	263.75
D943	VIGO Q	LED-wall luminaire, IP54, white	4W LED 3000K incl. driver	244.00	263.75
D944	VIGO Q	LED-wall luminaire, IP54, black	4W LED 3000K incl. driver	244.00	263.75
D295	VIGO XL	LED-wall luminaire, IP65, white	12,5W LED 3000K CRI>90 incl. driver	375.00	405.40
D300	VIGO XL	LED-wall luminaire, IP65, black	12,5W LED 3000K CRI>90 incl. driver	375.00	405.40
D322	VIGO Q XL	LED-wall luminaire, IP65, white	12,5W LED 3000K CRI>90 incl. driver	375.00	405.40
D349	VIGO Q XL	LED-wall luminaire, IP65, black	12,5W LED 3000K CRI>90 incl. driver	375.00	405.40
D834	WEBSTER 400	LED-bollard luminaire, CRI>90, IP54, grey	1x6W LED 3000K CRI>90 incl. driver	560.00	605.35
D833	WEBSTER 900	LED-bollard luminaire, IP54, grey	1x5,4W LED 3000K incl. driver	750.00	810.75
D832	YORK 200	LED-bollard and wall luminaire, IP54, grey	1x6W LED 3000K incl. driver	335.00	362.15
D837	YORK 200	LED-bollard and wall luminaire, IP54, graphite	1x6W LED 3000K incl. driver	335.00	362.15
D827	YORK	LED-bollard luminaire, IP54, grey	1x6W LED 3000K incl. driver	553.00	597.80
D831	YORK	LED-bollard luminaire, IP54, graphite	1x6W LED 3000K incl. driver	553.00	597.80
131-11-00-03	ZOOM	LED-recessed fixture, CRI>90, focusable, white	1x2W LED 15°-60° 2700K CRI>90 500mA excl. driver	290.00	313.50
131-09-00-03	ZOOM	LED-recessed fixture, CRI>90, focusable, white	1x2W LED 15°-60° 3000K CRI>90 500mA excl. driver	290.00	313.50
131-11-00-05	ZOOM	LED-recessed fixture, CRI>90, focusable, black	1x2W LED 15°-60° 2700K CRI>90 500mA excl. driver	290.00	313.50
131-09-00-05	ZOOM	LED-recessed fixture, CRI>90, focusable, black	1x2W LED 15°-60° 3000K CRI>90 500mA excl. driver	290.00	313.50
131-11-00-01	ZOOM	LED-recessed fixture, CRI>90, focusable, chrome	1x2W LED 15°-60° 2700K CRI>90 500mA excl. driver	277.00	299.45
131-09-00-01	ZOOM	LED-recessed fixture, CRI>90, focusable, chrome	1x2W LED 15°-60° 3000K CRI>90 500mA excl. driver	277.00	299.45
131-11-00-33	ZOOM	LED-recessed fixture, CRI>90, focusable, platinum	1x2W LED 15°-60° 2700K CRI>90 500mA excl. driver	277.00	299.45
131-09-00-33	ZOOM	LED-recessed fixture, CRI>90, focusable, platinum	1x2W LED 15°-60° 3000K CRI>90 500mA excl. driver	277.00	299.45
9000-0141	ZOOM mounting box 41	Mounting box for ZOOM	-	48.00	51.90
139-11-00-05	ZOOM AB FLEX	LED-luminaire, CRI>90, focusable, black	1x2W LED 15°-60° 2700K CRI>90 excl. driver	317.00	342.70
139-09-00-05	ZOOM AB FLEX	LED-luminaire, CRI>90, focusable, black	1x2W LED 15°-60° 3000K CRI>90 excl. driver	317.00	342.70
139-11-00-01	ZOOM AB FLEX	LED-luminaire, CRI>90, focusable, chrome	1x2W LED 15°-60° 2700K CRI>90 excl. driver	266.00	287.55
139-09-00-01	ZOOM AB FLEX	LED-luminaire, CRI>90, focusable, chrome	1x2W LED 15°-60° 3000K CRI>90 excl. driver	266.00	287.55
139-11-00-33	ZOOM AB FLEX	LED-luminaire, CRI>90, focusable, platinum	1x2W LED 15°-60° 2700K CRI>90 excl. driver	266.00	287.55
139-09-00-33	ZOOM AB FLEX	LED-luminaire, CRI>90, focusable, platinum	1x2W LED 15°-60° 3000K CRI>90 excl. driver	266.00	287.55
140-11-00-05	ZOOM AB FLEX SWITCH	LED-luminaire, CRI>90, focusable, black	1x2W LED 15°-60° 2700K CRI>90 excl. driver	339.00	366.45
140-09-00-05	ZOOM AB FLEX SWITCH	LED-luminaire, CRI>90, focusable, black	1x2W LED 15°-60° 3000K CRI>90 excl. driver	339.00	366.45
140-11-00-01	ZOOM AB FLEX SWITCH	LED-luminaire, CRI>90, focusable, chrome	1x2W LED 15°-60° 2700K CRI>90 excl. driver	291.00	314.55
140-09-00-01	ZOOM AB FLEX SWITCH	LED-luminaire, CRI>90, focusable, chrome	1x2W LED 15°-60° 3000K CRI>90 excl. driver	291.00	314.55
140-11-00-33	ZOOM AB FLEX SWITCH	LED-luminaire, CRI>90, focusable, platinum	1x2W LED 15°-60° 2700K CRI>90 excl. driver	291.00	314.55
140-09-00-33	ZOOM AB FLEX SWITCH	LED-luminaire, CRI>90, focusable, platinum	1x2W LED 15°-60° 3000K CRI>90 excl. driver	291.00	314.55
132-11-00-03	ZOOM DS	LED-fixture, CRI>90, focusable, white	1x2W LED 15°-60° 2700K CRI>90 500mA excl. driver	295.00	318.90
132-09-00-03	ZOOM DS	LED-fixture, CRI>90, focusable, white	1x2W LED 15°-60° 3000K CRI>90 500mA excl. driver	295.00	318.90
132-11-00-05	ZOOM DS	LED-fixture, CRI>90, focusable, black	1x2W LED 15°-60° 2700K CRI>90 500mA excl. driver	295.00	318.90
132-09-00-05	ZOOM DS	LED-fixture, CRI>90, focusable, black	1x2W LED 15°-60° 3000K CRI>90 500mA excl. driver	295.00	318.90
132-11-00-01	ZOOM DS	LED-fixture, CRI>90, focusable, chrome	1x2W LED 15°-60° 2700K CRI>90 500mA excl. driver	282.00	304.85
132-09-00-01	ZOOM DS	LED-fixture, CRI>90, focusable, chrome	1x2W LED 15°-60° 3000K CRI>90 500mA excl. driver	282.00	304.85
132-11-00-33	ZOOM DS	LED-fixture, CRI>90, focusable, platinum	1x2W LED 15°-60° 2700K CRI>90 500mA excl. driver	282.00	304.85
132-09-00-33	ZOOM DS	LED-fixture, CRI>90, focusable, platinum	1x2W LED 15°-60° 3000K CRI>90 500mA excl. driver	282.00	304.85
141-09-00-05	ZOOM FLOOR	LED-floor luminaire, CRI>90, focusable, including foot-switch, black	1x2W LED 15°-60° 3000K CRI>90 incl. driver	680.00	735.10
141-09-00-33	ZOOM FLOOR	LED-floor luminaire, CRI>90, focusable, including foot-switch, platinum	1x2W LED 15°-60° 3000K CRI>90 incl. driver	680.00	735.10
135-09-00-05	ZOOM TABLE	LED-table luminaire, CRI>90, focusable, black	1x2W LED 15°-60° 3000K CRI>90 incl. driver	470.00	508.05
135-09-00-33	ZOOM TABLE	LED-table luminaire, CRI>90, focusable, platinum	1x2W LED 15°-60° 3000K CRI>90 incl. driver	470.00	508.05
133-11-00-05	ZOOM TELE	LED-recessed fixture, single, CRI>90, focusable, black	1x2W LED 15°-60° 2700K CRI>90 500mA excl. driver	342.00	369.70
133-09-00-05	ZOOM TELE	LED-recessed fixture, single, CRI>90, focusable, black	1x2W LED 15°-60° 3000K CRI>90 500mA excl. driver	342.00	369.70
133-11-00-01	ZOOM TELE	LED-recessed fixture, single, CRI>90, focusable, chrome	1x2W LED 15°-60° 2700K CRI>90 500mA excl. driver	331.00	357.80
133-09-00-01	ZOOM TELE	LED-recessed fixture, single, CRI>90, focusable, chrome	1x2W LED 15°-60° 3000K CRI>90 500mA excl. driver	331.00	357.80
133-11-00-33	ZOOM TELE	LED-recessed fixture, single, CRI>90, focusable, platinum	1x2W LED 15°-60° 2700K CRI>90 500mA excl. driver	331.00	357.80
133-09-00-33	ZOOM TELE	LED-recessed fixture, single, CRI>90, focusable, platinum	1x2W LED 15°-60° 3000K CRI>90 500mA excl. driver	331.00	357.80

N° Article	Nom du luminaire	Description	Spécifications	PRIX BRUT H.T	PRIX BRUT T.T.C
142-11-00-05	ZOOM TELE 2	LED-recessed fixture, double, CRI>90, focusable, black	2x2W LED 15°-60° 2700K CRI>90 500mA excl. driver	571.00	617.25
142-09-00-05	ZOOM TELE 2	LED-recessed fixture, double, CRI>90, focusable, black	2x2W LED 15°-60° 3000K CRI>90 500mA excl. driver	571.00	617.25
142-11-00-01	ZOOM TELE 2	LED-recessed fixture, double, CRI>90, focusable, chrome	2x2W LED 15°-60° 2700K CRI>90 500mA excl. driver	564.00	609.70
142-09-00-01	ZOOM TELE 2	LED-recessed fixture, double, CRI>90, focusable, chrome	2x2W LED 15°-60° 3000K CRI>90 500mA excl. driver	564.00	609.70
142-11-00-33	ZOOM TELE 2	LED-recessed fixture, double, CRI>90, focusable, platinum	2x2W LED 15°-60° 2700K CRI>90 500mA excl. driver	564.00	609.70
142-09-00-33	ZOOM TELE 2	LED-recessed fixture, double, CRI>90, focusable, platinum	2x2W LED 15°-60° 3000K CRI>90 500mA excl. driver	564.00	609.70
136-11-00-05	ZOOM T FLEX	LED-luminaire, CRI>90, focusable, black	1x2W LED 15°-60° 2700K CRI>90 incl. driver	477.00	515.65
136-09-00-05	ZOOM T FLEX	LED-luminaire, CRI>90, focusable, black	1x2W LED 15°-60° 3000K CRI>90 incl. driver	477.00	515.65
136-11-00-01	ZOOM T FLEX	LED-luminaire, CRI>90, focusable, chrome	1x2W LED 15°-60° 2700K CRI>90 incl. driver	448.00	484.30
136-09-00-01	ZOOM T FLEX	LED-luminaire, CRI>90, focusable, chrome	1x2W LED 15°-60° 3000K CRI>90 incl. driver	448.00	484.30
136-11-00-33	ZOOM T FLEX	LED-luminaire, CRI>90, focusable, platinum	1x2W LED 15°-60° 2700K CRI>90 incl. driver	448.00	484.30
136-09-00-33	ZOOM T FLEX	LED-luminaire, CRI>90, focusable, platinum	1x2W LED 15°-60° 3000K CRI>90 incl. driver	448.00	484.30
137-11-00-05	ZOOM TQ FLEX	LED-luminaire, CRI>90, focusable, black	1x2W LED 15°-60° 2700K CRI>90 incl. driver	580.00	627.00
137-09-00-05	ZOOM TQ FLEX	LED-luminaire, CRI>90, focusable, black	1x2W LED 15°-60° 3000K CRI>90 incl. driver	580.00	627.00
137-11-00-01	ZOOM TQ FLEX	LED-luminaire, CRI>90, focusable, chrome	1x2W LED 15°-60° 2700K CRI>90 incl. driver	482.00	521.05
137-09-00-01	ZOOM TQ FLEX	LED-luminaire, CRI>90, focusable, chrome	1x2W LED 15°-60° 3000K CRI>90 incl. driver	482.00	521.05
137-11-00-33	ZOOM TQ FLEX	LED-luminaire, CRI>90, focusable, platinum	1x2W LED 15°-60° 2700K CRI>90 incl. driver	482.00	521.05
137-09-00-33	ZOOM TQ FLEX	LED-luminaire, CRI>90, focusable, platinum	1x2W LED 15°-60° 3000K CRI>90 incl. driver	482.00	521.05
134-11-00-03EP	ZOOM XL - EP	LED-recessed fixture, CRI>90, focusable, white	1x4,1W LED 15°-60° 2700K CRI>90 250mA excl. driver	448.00	484.30
134-09-00-03EP	ZOOM XL - EP	LED-recessed fixture, CRI>90, focusable, white	1x4,1W LED 15°-60° 3000K CRI>90 250mA excl. driver	448.00	484.30
134-11-00-05EP	ZOOM XL - EP	LED-recessed fixture, CRI>90, focusable, black	1x4,1W LED 15°-60° 2700K CRI>90 250mA excl. driver	448.00	484.30
134-09-00-05EP	ZOOM XL - EP	LED-recessed fixture, CRI>90, focusable, black	1x4,1W LED 15°-60° 3000K CRI>90 250mA excl. driver	448.00	484.30
134-11-00-01EP	ZOOM XL - EP	LED-recessed fixture, CRI>90, focusable, chrome	1x4,1W LED 15°-60° 2700K CRI>90 250mA excl. driver	419.00	452.95
134-09-00-01EP	ZOOM XL - EP	LED-recessed fixture, CRI>90, focusable, chrome	1x4,1W LED 15°-60° 3000K CRI>90 250mA excl. driver	419.00	452.95
134-11-00-33EP	ZOOM XL - EP	LED-recessed fixture, CRI>90, focusable, platinum	1x4,1W LED 15°-60° 2700K CRI>90 250mA excl. driver	419.00	452.95
134-09-00-33EP	ZOOM XL - EP	LED-recessed fixture, CRI>90, focusable, platinum	1x4,1W LED 15°-60° 3000K CRI>90 250mA excl. driver	419.00	452.95
134-11-00-03P3	ZOOM XL - P3	LED-fixture with 3-phase adapter, CRI>90, focusable, white	1x4,1W LED 15°-60° 2700K CRI>90 incl. driver	517.00	558.90
134-09-00-03P3	ZOOM XL - P3	LED-fixture with 3-phase adapter, CRI>90, focusable, white	1x4,1W LED 15°-60° 3000K CRI>90 incl. driver	517.00	558.90
134-11-00-05P3	ZOOM XL - P3	LED-fixture with 3-phase adapter, CRI>90, focusable, black	1x4,1W LED 15°-60° 2700K CRI>90 incl. driver	517.00	558.90
134-09-00-05P3	ZOOM XL - P3	LED-fixture with 3-phase adapter, CRI>90, focusable, black	1x4,1W LED 15°-60° 3000K CRI>90 incl. driver	517.00	558.90
134-11-00-03T	ZOOM XL - T	LED-fixture, CRI>90, dimmable, focusable, white	1x4,1W LED 15°-60° 2700K CRI>90 incl. driver phase dim	513.00	554.55
134-09-00-03T	ZOOM XL - T	LED-fixture, CRI>90, dimmable, focusable, white	1x4,1W LED 15°-60° 3000K CRI>90 incl. driver phase dim	513.00	554.55
134-11-00-05T	ZOOM XL - T	LED-fixture, CRI>90, dimmable, focusable, black	1x4,1W LED 15°-60° 2700K CRI>90 incl. driver phase dim	513.00	554.55
134-09-00-05T	ZOOM XL - T	LED-fixture, CRI>90, dimmable, focusable, black	1x4,1W LED 15°-60° 3000K CRI>90 incl. driver phase dim	513.00	554.55
134-11-00-01T	ZOOM XL - T	LED-fixture, CRI>90, dimmable, focusable, chrome	1x4,1W LED 15°-60° 2700K CRI>90 incl. driver phase dim	495.00	535.10
134-09-00-01T	ZOOM XL - T	LED-fixture, CRI>90, dimmable, focusable, chrome	1x4,1W LED 15°-60° 3000K CRI>90 incl. driver phase dim	495.00	535.10
134-11-00-33T	ZOOM XL - T	LED-fixture, CRI>90, dimmable, focusable, platinum	1x4,1W LED 15°-60° 2700K CRI>90 incl. driver phase dim	495.00	535.10
134-09-00-33T	ZOOM XL - T	LED-fixture, CRI>90, dimmable, focusable, platinum	1x4,1W LED 15°-60° 3000K CRI>90 incl. driver phase dim	495.00	535.10
D-GB2100-2	TRACK 1 - P1	1-phase lighting track, L=1000mm, black	-	58.00	62.70
D-GB2100-3	TRACK 1 - P1	1-phase lighting track, L=1000mm, white	-	58.00	62.70
D-GB2200-2	TRACK 2 - P1	1-phase lighting track, L=2000mm, black	-	116.00	125.40
D-GB2200-3	TRACK 2 - P1	1-phase lighting track, L=2000mm, white	-	116.00	125.40
D-GB11-2	END FEED P1	1-phase end power feed, right, black	-	19.00	20.55
D-GB11-3	END FEED P1	1-phase end power feed, right, white	-	19.00	20.55
D-GB12-2	END FEED P1	1-phase end power feed, left, black	-	19.00	20.55
D-GB12-3	END FEED P1	1-phase end power feed, left, white	-	19.00	20.55
D-GB14-2	MIDDLE FEED P1	1-phase center power feed, black	-	51.00	55.15
D-GB14-3	MIDDLE FEED P1	1-phase center power feed, white	-	51.00	55.15
D-GB21-2	STRAIGHT CONNECTOR P1	1-phase straight connector, black	-	18.00	19.45
D-GB21-3	STRAIGHT CONNECTOR P1	1-phase straight connector, white	-	18.00	19.45
D-GB34-2	L-FEED P1	1-phase L-feed, right, black	-	51.00	55.15
D-GB34-3	L-FEED P1	1-phase L-feed, right, white	-	51.00	55.15
D-GB35-2	L-FEED P1	1-phase L-feed, left, black	-	51.00	55.15
D-GB35-3	L-FEED P1	1-phase L-feed, left, white	-	51.00	55.15
D-GB36-2	T-FEED P1	1-phase T-feed, right-right, black	-	71.00	76.75
D-GB36-3	T-FEED P1	1-phase T-feed, right-right, white	-	71.00	76.75
D-GB37-2	T-FEED P1	1-phase T-feed, left-left, black	-	71.00	76.75

N° Article	Nom du luminaire	Description	Spécifications	PRIX BRUT H.T	PRIX BRUT T.T.C
D-GB37-3	T-FEED P1	1-phase T-feed, left-left, white	-	71.00	76.75
D-GB39-2	T-FEED P1	1-phase T-feed, right-left, black	-	71.00	76.75
D-GB39-3	T-FEED P1	1-phase T-feed, right-left, white	-	71.00	76.75
D-GB40-2	T-FEED P1	1-phase T-feed, left-right, black	-	71.00	76.75
D-GB40-3	T-FEED P1	1-phase T-feed, left-right, white	-	71.00	76.75
D-GB38-2	X-FEED P1	1-phase X-feed, black	-	93.00	100.55
D-GB38-3	X-FEED P1	1-phase X-feed, white	-	93.00	100.55
D-GB41-2	END CAP P1	1-phase end cap, black	-	4.00	4.30
D-GB41-3	END CAP P1	1-phase end cap, white	-	4.00	4.30
D-GB66-2	ADAPTER P1	1-phase adapter (max. 5 kg), black	-	17.00	18.40
D-GB66-3	ADAPTER P1	1-phase adapter (max. 5 kg), white	-	17.00	18.40
D-XTSA510-2	STRAIN RELIEF P1/P3	1-phase / 3-phase strain relief M10x1, black	-	4.00	4.30
D-XTSA510-3	STRAIN RELIEF P1/P3	1-phase / 3-phase strain relief M10x1, white	-	4.00	4.30
D-GA57/10-2	NIPPLE P1	1-phase nipple M10, black	-	1.00	1.10
D-GA57/10-3	NIPPLE P1	1-phase nipple M10, white	-	1.00	1.10
D-SPW1-2/3M	WIRE SUSPENSION P1	1-phase wire suspension L = 3000 mm (max. 150 kg/please order suspension clamp separately), black	-	19.00	20.55
D-SPW1-3/3M	WIRE SUSPENSION P1	1-phase wire suspension L = 3000 mm (max. 150 kg/please order suspension clamp separately), white	-	19.00	20.55
D-GBS33-9	SUSPENSION CLAMP	1-phase suspension clamp, alu anodised	-	5.00	5.40
D-XTS4100-2	TRACK 1 - P3	3-phase lighting track, L=1000mm, black	-	53.00	57.30
D-XTS4100-3	TRACK 1 - P3	3-phase lighting track, L=1000mm, white	-	53.00	57.30
D-XTS4200-2	TRACK 2 - P3	3-phase lighting track, L=2000mm, black	-	106.00	114.60
D-XTS4200-3	TRACK 2 - P3	3-phase lighting track, L=2000mm, white	-	106.00	114.60
D-XTS11-2	END FEED P3	3-phase end power feed, right, black	-	20.00	21.60
D-XTS11-3	END FEED P3	3-phase end power feed, right, white	-	20.00	21.60
D-XTS12-2	END FEED P3	3-phase end power feed, left, black	-	20.00	21.60
D-XTS12-3	END FEED P3	3-phase end power feed, left, white	-	20.00	21.60
D-XTS14-2	MIDDLE FEED P3	3-phase center power feed, black	-	50.00	54.05
D-XTS14-3	MIDDLE FEED P3	3-phase center power feed, white	-	50.00	54.05
D-XTS21-2	STRAIGHT CONNECTOR P3	3-phase straight connector, black	-	14.00	15.15
D-XTS21-3	STRAIGHT CONNECTOR P3	3-phase straight connector, white	-	14.00	15.15
D-XTS23-2	FLEXIBLE CONNECTOR P3	Flexible 3-phase connector, 0°-360°, black	-	69.00	74.60
D-XTS23-3	FLEXIBLE CONNECTOR P3	Flexible 3-phase connector, 0°-360°, white	-	69.00	74.60
D-XTS24-2	ADJUSTABLE CONNECTOR P3	Adjustable 3-phase connector, 60°-300°, black	-	60.00	64.85
D-XTS24-3	ADJUSTABLE CONNECTOR P3	Adjustable 3-phase connector, 60°-300°, white	-	60.00	64.85
D-XTS34-2	L-FEED P3	3-phase L-feed, right, black	-	53.00	57.30
D-XTS34-3	L-FEED P3	3-phase L-feed, right, white	-	53.00	57.30
D-XTS35-2	L-FEED P3	3-phase L-feed, left, black	-	53.00	57.30
D-XTS35-3	L-FEED P3	3-phase L-feed, left, white	-	53.00	57.30
D-XTS36-2	T-FEED P3	3-phase T-feed, right-right, black	-	80.00	86.50
D-XTS36-3	T-FEED P3	3-phase T-feed, right-right, white	-	80.00	86.50
D-XTS37-2	T-FEED P3	3-phase T-feed, left-left, black	-	80.00	86.50
D-XTS37-3	T-FEED P3	3-phase T-feed, left-left, white	-	80.00	86.50
D-XTS39-2	T-FEED P3	3-phase T-feed, right-left, black	-	80.00	86.50
D-XTS39-3	T-FEED P3	3-phase T-feed, right-left, white	-	80.00	86.50
D-XTS40-2	T-FEED P3	3-phase T-feed, left-right, black	-	80.00	86.50
D-XTS40-3	T-FEED P3	3-phase T-feed, left-right, white	-	80.00	86.50
D-XTS38-2	X-FEED P3	3-phase X-feed, black	-	100.00	108.10
D-XTS38-3	X-FEED P3	3-phase X-feed, white	-	100.00	108.10
D-XTS41-2	END CAP P3	3-phase end cap, black	-	3.00	3.25
D-XTS41-3	END CAP P3	3-phase end cap, white	-	3.00	3.25
D-GA69-2	MULTI ADAPTER P3	3-phase multi adapter (max. 5 kg), black	-	27.00	29.20
D-GA69-3	MULTI ADAPTER P3	3-phase multi adapter (max. 5 kg), white	-	27.00	29.20
D-XTSA510-2	STRAIN RELIEF P1/P3	1-phase / 3-phase strain relief M10x1, black	-	4.00	4.30
D-XTSA510-3	STRAIN RELIEF P1/P3	1-phase / 3-phase strain relief M10x1, white	-	4.00	4.30
D-XTS58/8-9	NIPPLE P3	3-phase nipple M10, alu	-	6.00	6.50
D-SPW12SK-2/1.5M	WIRE SUSPENSION P3	3-phase wire suspension L = 1500 mm (max. 150 kg), black	-	23.00	24.85
D-SPW12SK-3/1.5M	WIRE SUSPENSION P3	3-phase wire suspension L = 1500 mm (max. 150 kg), white	-	23.00	24.85

N° Article	Nom du luminaire	Description	Spécifications	PRIX BRUT H.T	PRIX BRUT T.T.C
D-SPW12SK-2/3M	WIRE SUSPENSION P3	3-phase wire suspension L = 3000 mm (max. 150 kg), black	-	29.00	31.35
D-SPW12SK-3/3M	WIRE SUSPENSION P3	3-phase wire suspension L = 3000 mm (max. 150 kg), white	-	29.00	31.35
D-SKB12-2	SUSPENSION CLAMP P3	Suspension Clamp for 3-phase lighting tracks, black	-	7.00	7.55
D-SKB12-3	SUSPENSION CLAMP P3	Suspension Clamp for 3-phase lighting track, white	-	7.00	7.55
D-GA70-2	FIX POINT P3	Fix Point for 3-phase adapter, black	-	90.00	97.30
D-GA70-3	FIX POINT P3	Fix Point for 3-phase adapter, white	-	90.00	97.30
D-XTSV12	BENDING TOOL P3	3-phase bending tool for power wires, blue	-	34.00	36.75
CC-250-06-PC	DRIVER 250 mA dim	DRIVER 250 mA, phase dim, 4,0-6,0 W, 47x43x20 mm	-	60.00	64.85
CC-350-06s	DRIVER 350 mA	DRIVER 350 mA, 0,9-6,7 W, 49x27x20 mm	-	33.00	35.65
CC-350-08	DRIVER 350 mA	DRIVER 350 mA, 1,0-8,0 W, 68x35x21 mm	-	35.00	37.85
CC-350-13-PC	DRIVER 350 mA dim	DRIVER 350 mA, phase dim, 6,5-13,0 W, 120x53x25 mm	-	38.00	41.10
CC-350-15	DRIVER 350 mA	DRIVER 350 mA, 1,0-15,0 W, 115x34x19 mm	-	44.00	47.55
CC-350-18-PC	DRIVER 350 mA dim	DRIVER 350 mA, phase dim, 9,5-18,0 W, 120x53x30 mm	-	38.00	41.10
CC-500-06	DRIVER 500 mA	DRIVER 500 mA, 1,0-6,0 W, 68x35x22 mm	-	37.00	40.00
CC-500-06s	DRIVER 500 mA	DRIVER 500 mA, 1,4-6,4 W, 49x27x20 mm	-	33.00	35.65
CC-500-06-PC	DRIVER 500 mA dim	DRIVER 500 mA, phase dim, 3,0-6,0 W, 82x41x22 mm	-	42.00	45.40
CC-500-10-PC	DRIVER 500 mA dim	DRIVER 500 mA, phase dim, 6,0-10,0 W, 85x41x22 mm	-	44.00	47.55
CC-500-12	DRIVER 500 mA	DRIVER 500 mA, 1,0-12,0 W, 115x34x19 mm	-	46.00	49.75
CC-500-18-PC	DRIVER 500 mA dim	DRIVER 500 mA, phase dim, 9,0-18,0 W, 120x53x30 mm	-	48.00	51.90
CC-500-20	DRIVER 500 mA	DRIVER 500 mA, 1,0-20,0 W, 122x38x28 mm	-	52.00	56.20
CC-500-21-PC	DRIVER 500 mA dim	DRIVER 500 mA, phase dim, 14,0-21,0 W, 102x51x30 mm	-	48.00	51.90
CC-700-03	DRIVER 700 mA	DRIVER 700 mA, 1,9-2,8 W, 65x29x18 mm	-	33.00	35.65
CC-700-10-PC	DRIVER 700 mA dim	DRIVER 700 mA, phase dim, 6,0-10,0 W, 85x41x22 mm	-	49.00	52.95
CC-700-15-PC	DRIVER 700 mA dim	DRIVER 700 mA, phase dim, 9,0-14,5 W, 85x41x22 mm	-	49.00	52.95
CC-700-25-PC	DRIVER 700 mA dim	DRIVER 700 mA, phase dim, 12,5-25,0 W, 120x53x30 mm	-	54.00	58.35
CC-700-35-PC	DRIVER 700 mA dim	DRIVER 700 mA, phase dim, 19,0-35,0 W, 153x54x36 mm	-	65.00	70.25
CC-1050-22	DRIVER 1050 mA	DRIVER 1050 mA, 2,0-22,0 W, 122x38x28 mm	-	58.00	62.70
CC-UNI-42	DRIVER UNIVERSAL	DRIVER UNIVERSAL, 1,1-15,0 W 350 mA, 1,5-22,0 W, 500 mA, 2,1-31,0 W, 700 mA, 2,7-38,0 W, 900 mA, 3	-	68.00	73.50
CC-UNI-DIM-20	DRIVER UNIVERSAL dim	DRIVER UNIVERSAL, DALI dim, 4,0-12,0 W 250 mA, 1,0-17,0 W 350 mA, 1,0-20,0 W 500 mA, 1,0-20,0 W 700 mA	-	97.00	104.85
CC-UNI-DIM-20-M	DRIVER UNIVERSAL dim	DRIVER UNIVERSAL, DALI, PUSH, 1-10 V dim, 1,5-15,0 W 250 mA, 2,1-15,0 W 350 mA, 3,0-20,0 W, 500 mA	-	97.00	104.85
CC-UNI-DA-20Z	DRIVER UNIVERSAL dim	DRIVER UNIVERSAL, DALI, PUSH, 1,0-11,0 W 250 mA, 1,0-15,0 W 350 mA, 1,5-20,0 W, 500 mA, 116x41x2	-	97.00	104.85
CC-UNI-DIM-60	DRIVER UNIVERSAL dim	DRIVER UNIVERSAL, DALI, PUSH, 1-10 V dim, 1,0-25,0 W 350 mA, 1,0-35,0 W 500 mA, 1,0-50,0 W 700 mA	-	153.00	165.40
CC-UNI-DIM-60-M	DRIVER UNIVERSAL dim	DRIVER UNIVERSAL, DALI, PUSH, 1-10 V dim, 2,1-20,3 W 2x350 mA, 3,0-29,0 W 2x500 mA, 4,2-29,4 W 2x	-	153.00	165.40
CV-24-18-IP67	DRIVER 24 Vdc - IP67	DRIVER 24 Vdc, 1-18 W, 100-240 V, 162x37x25 mm, IP67	-	66.00	71.35
ETZ 70	TRANSFORMER dim	TRANSFORMER 0-70 VA 12V/240V, phase dim, 95x42x28 mm	-	40.00	43.25
LUXIA 105	TRANSFORMER dim	TRANSFORMER 0-105 VA 12V/240V, phase dim, 119x37x35 mm	-	54.00	58.35
ETZ 210	TRANSFORMER dim	TRANSFORMER 0-210 VA 12V/240V, phase dim, 167x53x39 mm	-	86.00	92.95

Conditions générales de vente

OFFRES ET PRIX

Les offres de BDK SA sont sans engagement et ont une durée de validité de 3 mois sous réserve d'un accord spécifique entre les deux parties. Les prix sont exprimés en francs suisse et BDK SA se réserve le droit de réviser ses tarifs en cas de forte fluctuation des devises étrangères. Les prix présentés dans les catalogues papiers restent indicatifs et le client doit se référer à la version en ligne sur le site internet de l'entreprise pour s'informer sur les tarifs actuels. Les frais d'expédition et les taxes de recyclage ne sont pas inclus dans les devis offerts.

FRAIS D'EXPEDITION ET DE TRANSPORT

BDK SA détermine le mode de livraison et peut procéder à des livraisons partielles. Pour les expéditions par camion BDK, la signature du destinataire ou d'un membre de son personnel tiendra lieu de confirmation attestant que la livraison est complète et sans défaut apparent. Les livraisons expédiées par un service externe (La Poste Suisse, UPS, Camion Transport) sont aux risques et périls du destinataire. Les frais d'emballage et d'expédition par envoi postal sont facturés séparément selon les tarifs suivants :

Traitement d'emballage + envoi POSTPAC PRIORITY (max. 100x60x60mm – jusqu'à 30kg) – livraison sous 1 jour ouvrable: Frais de 18.00 CHF
Traitement d'emballage + envoi POSTPAC EXPRESS (max. 100x60x60mm – jusqu'à 30kg) – livraison sous 1 jour ouvrable, avant 9h00: Frais de 35.00 CHF
Traitement d'emballage + envoi POSTPAC ENCOMBRANT (max. 250x60x60mm – jusqu'à 30kg) – livraison sous 2 jours ouvrables: Frais de 35.00 CHF

Toutes commandes d'un montant supérieur à 1'500 CHF net hors taxe seront livrées franco. Les livraisons par camion BDK sont une prestation offerte par les services de BDK SA. Ce dernier décide de la planification des livraisons selon les régions et les disponibilités.

RECLAMATION

Toute réclamation concernant des livraisons en quantités insuffisantes ou erronées ainsi que des défauts éventuels doit impérativement être communiquée par écrit dans les **8 jours suivants la livraison**. Sans avis de votre part passé ce délai, BDK SA considère la marchandise comme acceptée et conforme et ne pourra plus faire d'objet d'une réclamation.

COMMANDE

En passant commande, le client reconnaît ces conditions de vente et de livraison. **Aucune modification ou annulation ne peut être acceptée.** La marchandise commandée sur appel est considérée comme acquise et doit être acceptée dans les délais fixés. En cas de livraison partielle demandée par le client, BDK SA s'autorise à établir une facture intermédiaire pour la marchandise déjà livrées ou stockées suite à un accord spécifique oral ou écrit entre les deux parties.

DELAI DE LIVRAISON

Les délais de livraison sont respectés dans la mesure du possible. Il ne sera pas tenu compte de demandes de compensation en cas de dépassement de ces derniers. L'évolution des commandes peut être renseignée sur demande par téléphone auprès du service clients de BDK SA.

PAIEMENT ET RETARD DE PAIEMENT

Les factures sont payables à 30 jours sans aucune déduction. BDK SA s'autorise à demander une demande d'acompte selon la valeur de la commande ou pour une ouverture de compte. En cas de retard de paiement, des intérêts de retard équivalent à 5% de la valeur comptabilisée seront facturés dès le premier rappel pour frais administratifs.

ECHANTILLONS

BDK SA met à disposition pour un délai de 15 jours ouvrables des échantillons de luminaires selon les stocks disponibles et s'autorise à renoncer à une demande selon le type de luminaire. Passé ce délai, les échantillons seront facturés et une note de crédit à 100% sera établie en cas de retour dans leur emballage d'origine et sans modification de la part du client. Les prototypes fabriqués spécialement pour un intéressé ne pourront faire l'objet d'un retour.

RETOURS

Le retour de marchandise doit être signalé par écrit et justifié par un motif valable. Dans tous les cas, la marchandise doit être retournée dûment emballée et franco domicile à BDK SA accompagnée du bulletin de livraison ou d'une facture correspondante. BDK SA s'autorise à ne pas donner suite à un retour de marchandise sans document annexé à l'envoi. BDK SA s'autorise à facturer des frais fixes pour la gestion et le contrôle des retours selon les tarifs suivants : Traitement d'un retour par réception postale d'un expéditeur, contrôle de la marchandise, remise en stock : Frais de 15.00 CHF Traitement d'un retour par la prise en charge de la marchandise par BDK SA, contrôle de la marchandise, remise en stock : Frais de 35.00 CHF. Ces tarifs ne comprennent pas les frais supplémentaires pour le renvoi de marchandise auprès du fabricant qui resteront la charge du client. La marchandise sans défaut sera créditée à 80% de sa valeur nette. Le matériel endommagé ne sera pas crédité et sera retourné à l'expéditeur. Les frais administratifs pour la gestion du retour et la remise en stock seront à la charge du client. L'emballage d'origine manquant sera facturé. Les exécutions spéciales ou fabrications sur-mesure ne pourront pas faire l'objet d'un retour.

BDK SA s'autorise à refuser un retour de marchandise si le motif n'impute pas une erreur de BDK SA.

GARANTIE

La garantie pour tous les luminaires et les modules de gestion est de 2 ans à dater de la livraison. Pendant cette période, elle se limite à des défauts décelables, imputables à des erreurs de matériel, d'exécution ou de fabrication de la part de BDK SA. Toutes autres garanties ou compensation de dommage sont exclues. En particulier, les frais de démontage ou remontage de luminaires et modules de gestion ne sont pas reconnus. En outre, aucune garantie ne sera valable pour du matériel qui aurait été modifié ou réparé par le client ou si les instructions d'installation ou de service fournis par le fabricant n'ont pas été respectées. Sont également exclus de la garantie, les luminaires dont la construction artisanale du client aurait des défauts imputables à des erreurs de conception.

